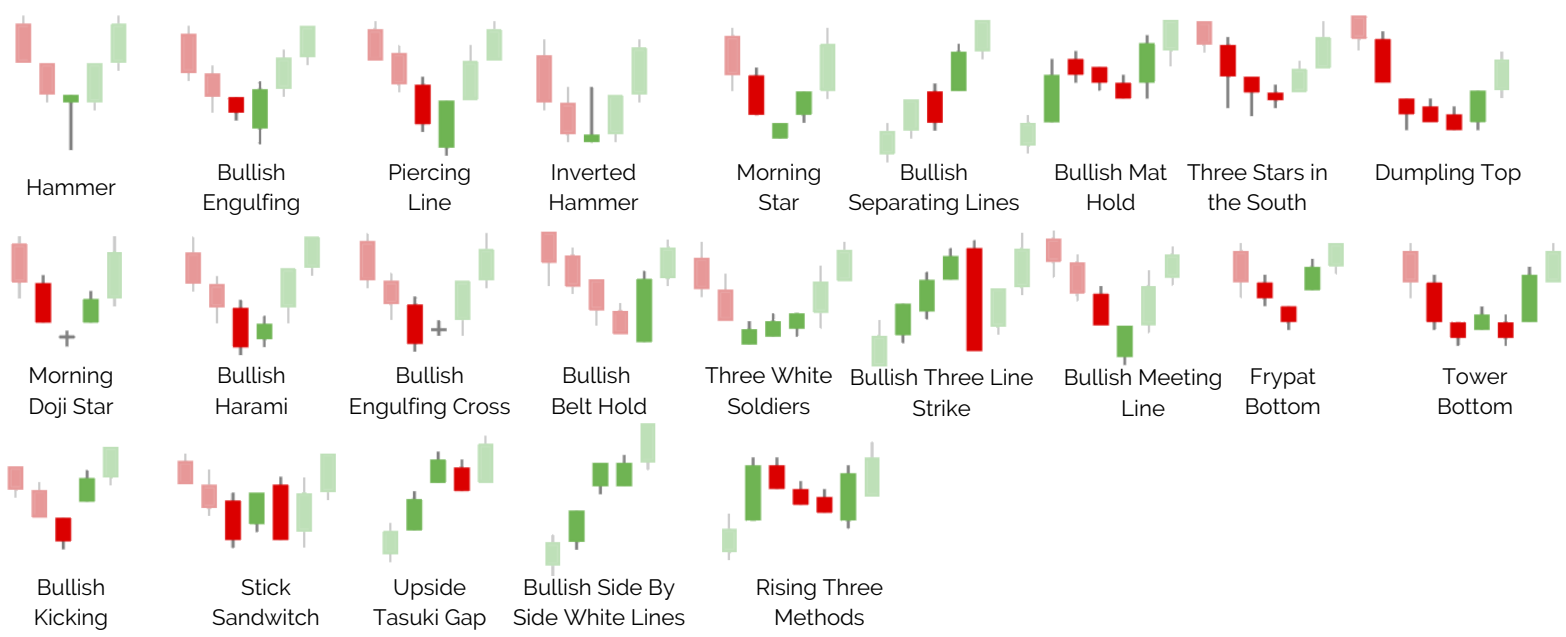


# THE ULTIMATE CANDLESTICK PATTERN CHEAT SHEET

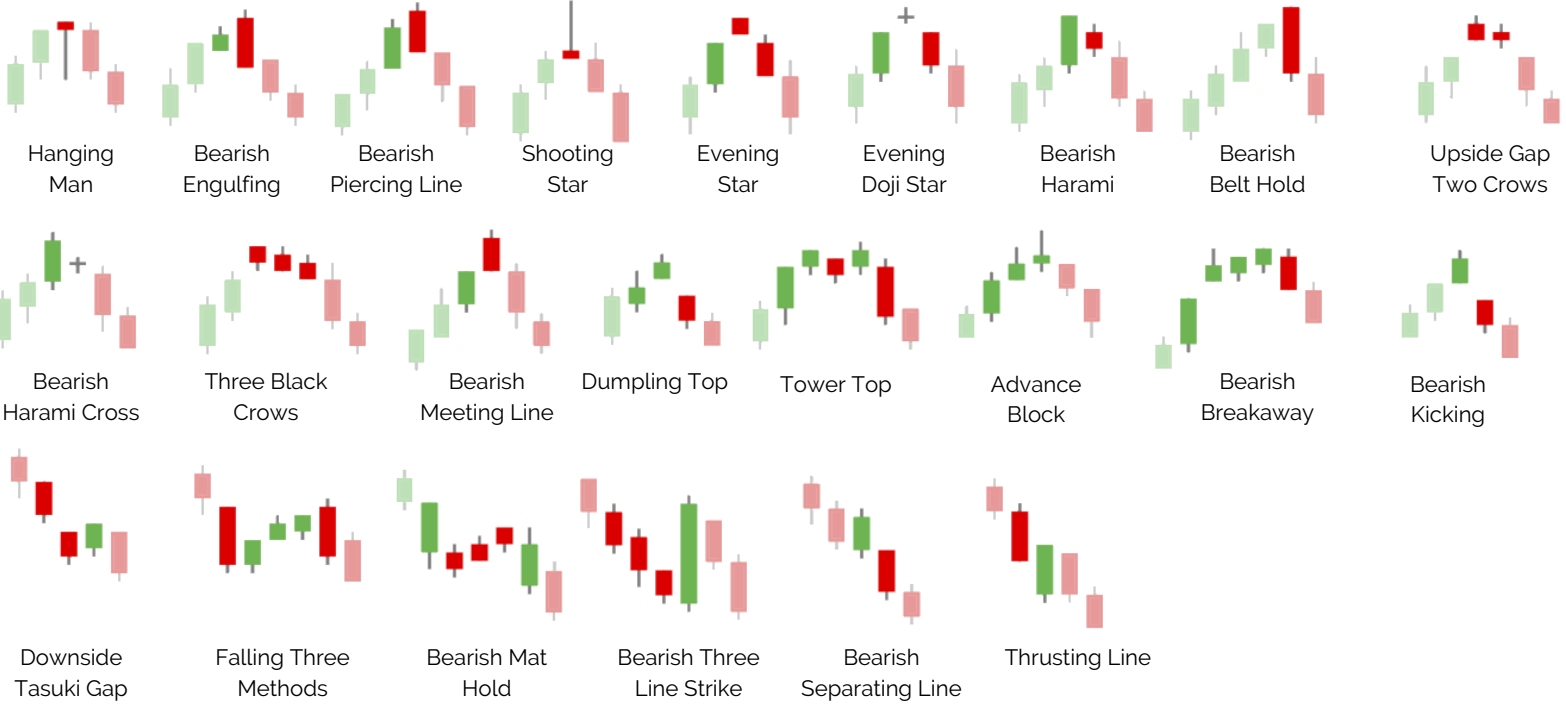
Bullish | Bearish | Reversal | Continuation

ALPHAEXCAPITAL  
LEARN TODAY. PROFIT TOMORROW.

## BULLISH CANDLESTICK PATTERNS



## BEARISH CANDLESTICK PATTERNS



### REVERSAL CANDLESTICK PATTERNS

### CONTINUATION CANDLESTICK PATTERNS

**Hammer**  
**Hanging man**  
**Bullish/Bearish engulfing**  
**Piercing Line**  
**Dark cloud**  
**Inverted hammer**  
**Shooting star**  
**Bullish/Bearish kicking**  
**Stick sandwich**  
**Morning star**  
**Evening star**  
**Morning doji star**  
**Evening doji star**  
**Bullish/Bearish harami**  
**Advance block**  
**Dumping top**  
**Bearish breakaway**  
**Bullish/Bearish belt hold**  
**Upside gap two crows**  
**Three white soldiers**  
**Three black crows**  
**Bullish/Bearish meeting line**  
**Tower bottom**  
**Morning star**  
**Evening star**  
**Three stars in the south**  
**Frypat bottom**  
**Dumping top**  
**Bullish/Bearish engulfing cross**

**Upside/Downside Tasuki Gap**  
**Bearish/Bullish side by side white lines**  
**Rising/Falling three methods**  
**Bullish/Bearish mat hold**  
**Bullish/Bearish three line strike**  
**Thrusting line**  
**Bullish/Bearish separating lines**

## ALPHAEX QUICK TIP THE ART OF EXECUTION

The best way to execute a trade from a candlestick pattern is to wait until the candlestick closes then place an order above the "trigger" candlestick's high (if it's a buy signal) or low (if it's a sell signal).

VISIT [WWW.ALPHAEXCAPITAL.COM](http://WWW.ALPHAEXCAPITAL.COM) FOR MORE TIPS

[/ALPHAEXCAPITAL](https://www.facebook.com/ALPHAEXCAPITAL)
[@ALPHAEXCAPITAL](https://twitter.com/ALPHAEXCAPITAL)
[@ALPHAEXCAPITAL](https://www.instagram.com/ALPHAEXCAPITAL)
[SEARCH: ALPHAEXCAPITAL](https://www.youtube.com/ALPHAEXCAPITAL)