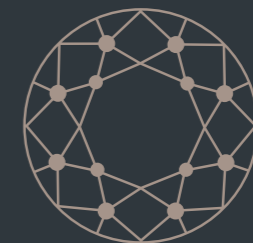


# THE *Concourse*

@TRINITY

Designed by Architects Zuideveld Marchant Hur



**RESIDENTIAL  
REPUBLIC**  
THE MASTERPLANNERS



Premium quality architect-designed frontages that reflect your style and flair.  
All residences completed with high spec turnkey finishes.

THE  
*Concourse*  
@TRINITY





# FEATURES

Here are the value-adding inclusions that will enhance your lifestyle and improve your capital gain.



Samsung ducted reverse-cycle air conditioning



Overhead kitchen cupboards and Essastone benchtops



LED lighting



All wall painting and stylish flooring to all living areas



Landscaping and reticulation with timers



Westinghouse 900mm stainless steel underbench oven, hotplate and integrated rangehood

**Plus, each residence benefits from a future-proof specification including the following:**

Skirting boards throughout (except wet areas), 28-course high internal doors, aluminium frames and stacking doors to ground floor

Hobless showers with stainless steel linear grates and upgraded tapware and accessories

32 amp charger for electric cars, neutral wiring and conduit provision for future photovoltaic cells on roof

Energy efficient and noise reducing V-Lam Hush 6.5mm glazing to all windows and doors

Provision for outdoor kitchen including hot and cold water connection and gas bayonet



# ELEVATION. LONGSTAFF AVENUE





# ELEVATION. HEMI WAY

THE  
*Concourse*  
@TRINITY









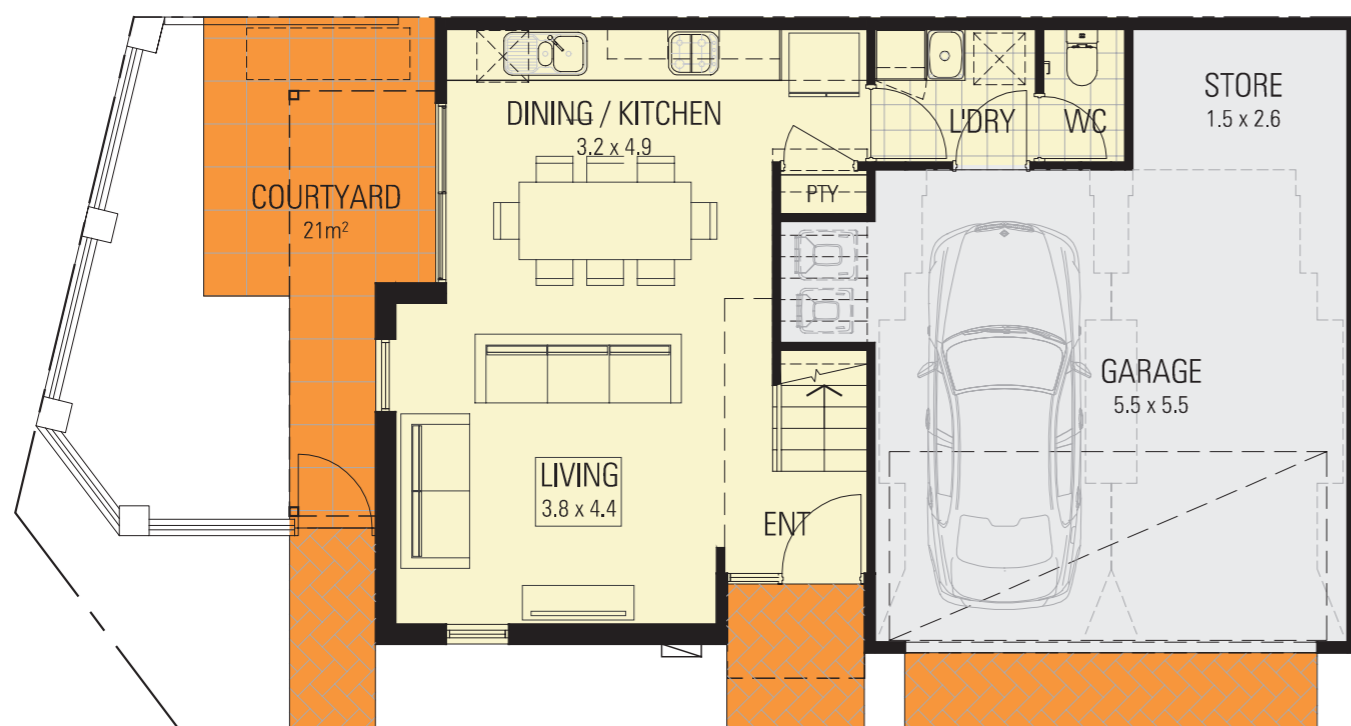




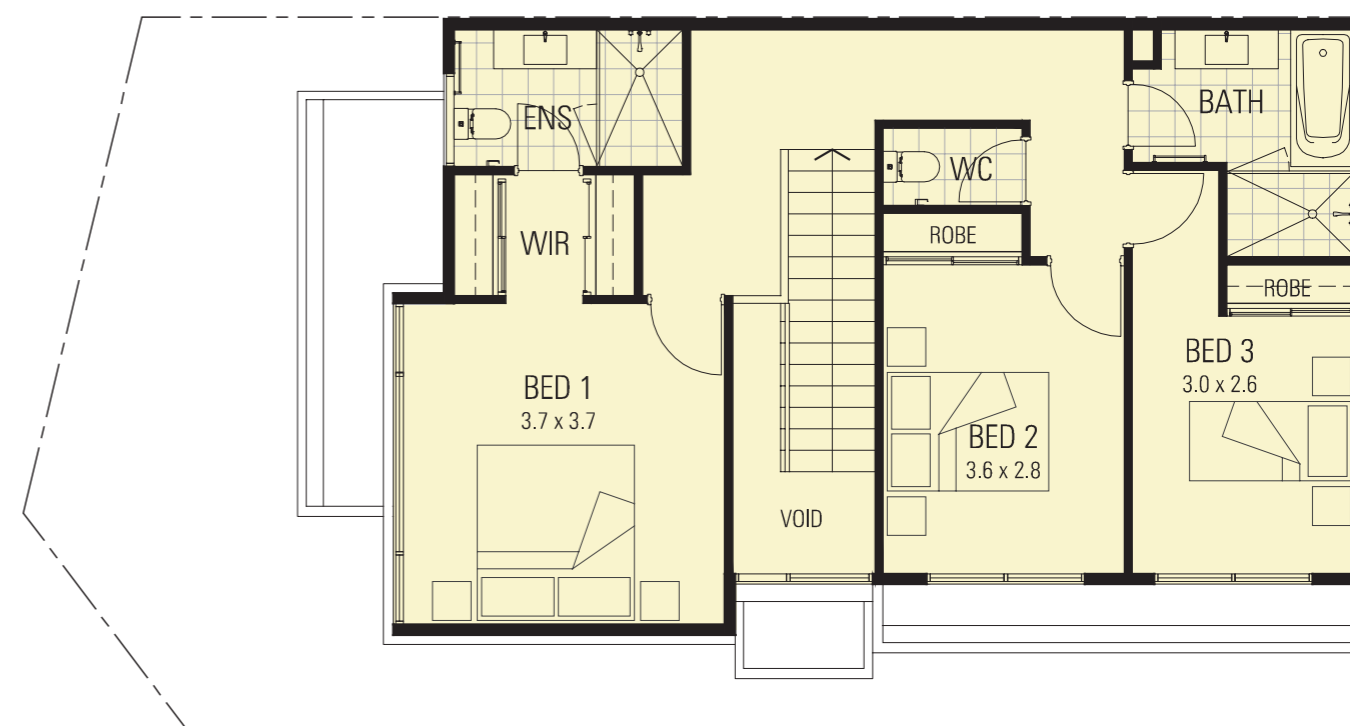
# THE SEATTLE. 1 ROSSI LANE







GROUND FLOOR



FIRST FLOOR

**THE SEATTLE INCLUDES:**

Residence	Living Area	Studio	Garage	Store	Sub Total	Outdoor Living	Courtyard	Porch/Balcony	Alfresco	Sub Total	House Size
	110.5m <sup>2</sup>	N/A	33.2m <sup>2</sup>	4.6m <sup>2</sup>	148.3m <sup>2</sup>		21m <sup>2</sup>	1.7m <sup>2</sup> /N/A	6.5m <sup>2</sup>	29.2m <sup>2</sup>	177.5m <sup>2</sup>

This design includes:

- Three bedrooms including master suite with walk-in robe and single vanity ensuite
- Bedrooms two and three feature built-in robes and are serviced by the second bathroom and separate WC
- Open plan kitchen, dining and living area

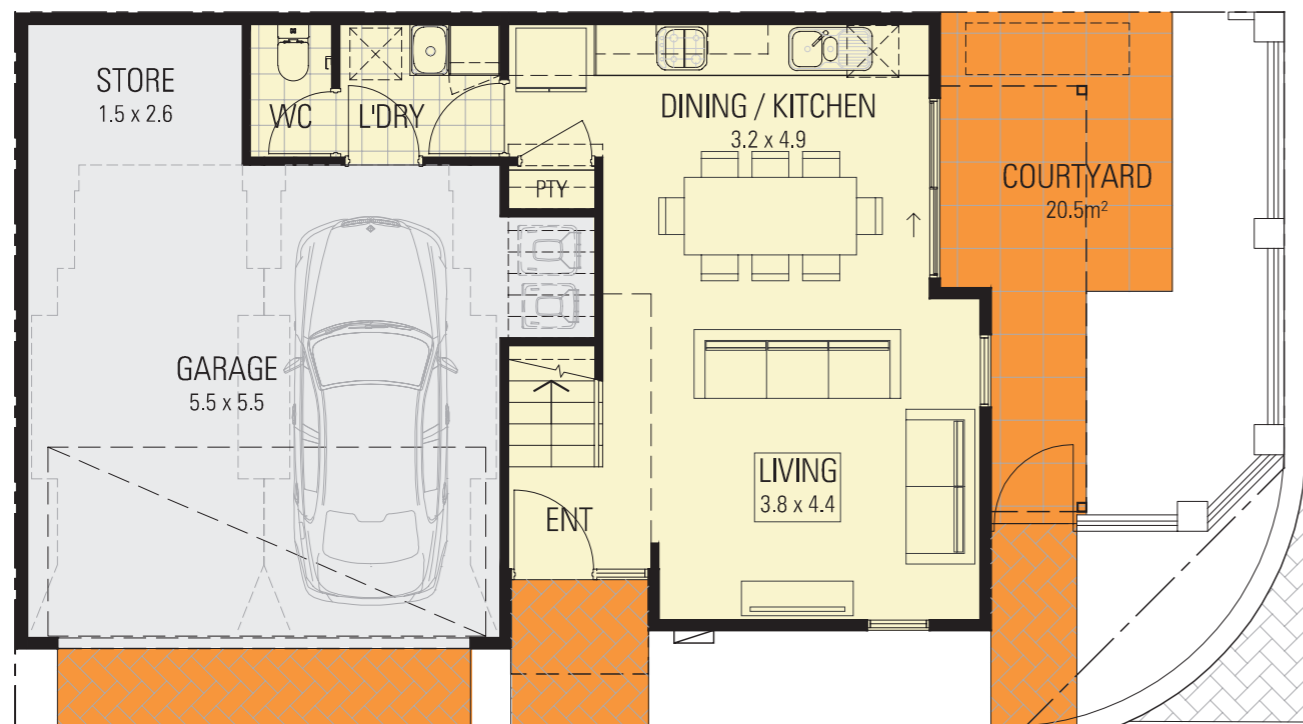
- Ground floor powder room and laundry
- Alfresco courtyard under main roof
- Double lock-up garage with storage area



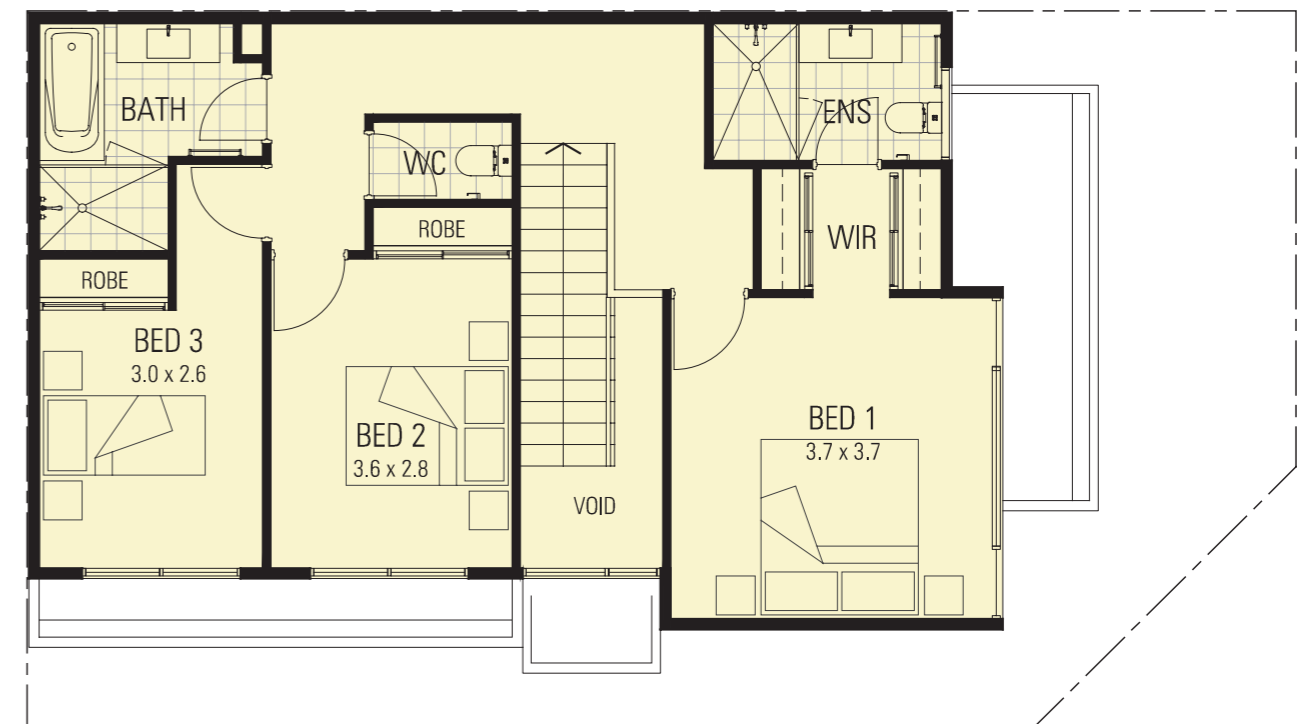
# THE OLYMPIA. 3 ROSSI LANE







GROUND FLOOR



FIRST FLOOR

**THE OLYMPIA INCLUDES:**

Residence	Living Area	Studio	Garage	Store	Sub Total	Outdoor Living	Courtyard	Porch/Balcony	Alfresco	Sub Total	House Size
	109.5m <sup>2</sup>	N/A	33.2m <sup>2</sup>	4.6m <sup>2</sup>	147.3m <sup>2</sup>		20.5m <sup>2</sup>	1.7m <sup>2</sup> /N/A	6.9m <sup>2</sup>	29.1m <sup>2</sup>	176.4m <sup>2</sup>

This design includes:

- Three bedrooms including master suite with walk-in robe and single vanity ensuite
- Bedrooms two and three feature built-in robes and are serviced by the second bathroom and separate WC
- Open plan kitchen, dining and living area

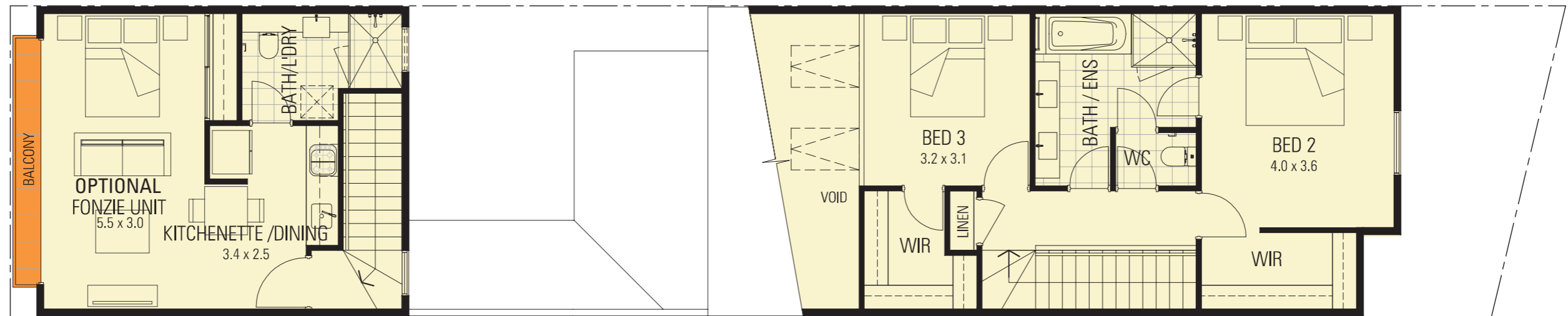
- Ground floor powder room and laundry
- Alfresco courtyard under main roof
- Double lock-up garage with storage area



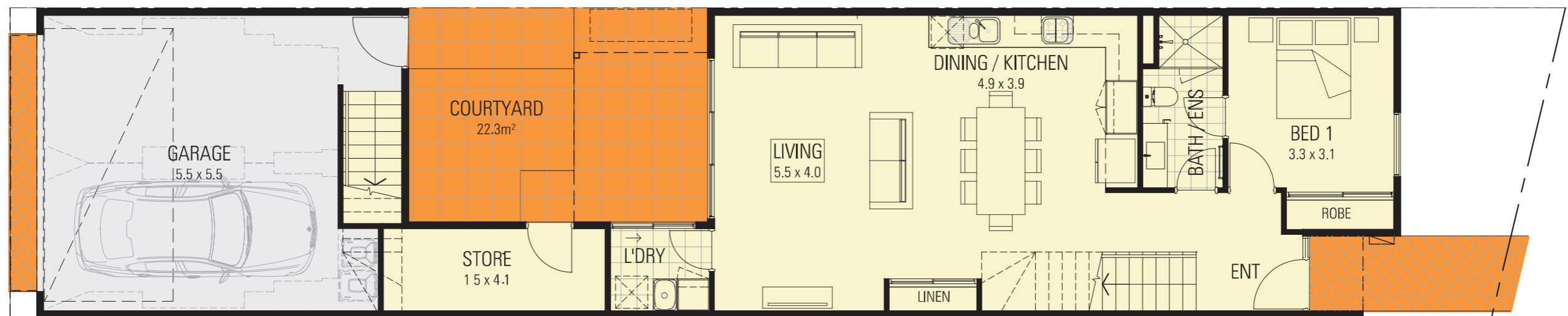
# THE SACRAMENTO. 27 LONGSTAFF AVENUE







FIRST FLOOR



GROUND FLOOR

**THE SACRAMENTO INCLUDES:**

Residence	Living Area	Studio	Garage	Store	Sub Total	Outdoor Living	Courtyard	Porch/Balcony	Alfresco	Sub Total	House Size
	128.1m <sup>2</sup>	36.3	38.9m <sup>2</sup>	7.5m <sup>2</sup>	210.8m <sup>2</sup>		22.3m <sup>2</sup>	4.7m <sup>2</sup>	8m <sup>2</sup>	35m <sup>2</sup>	245.8m <sup>2</sup>

This design includes:

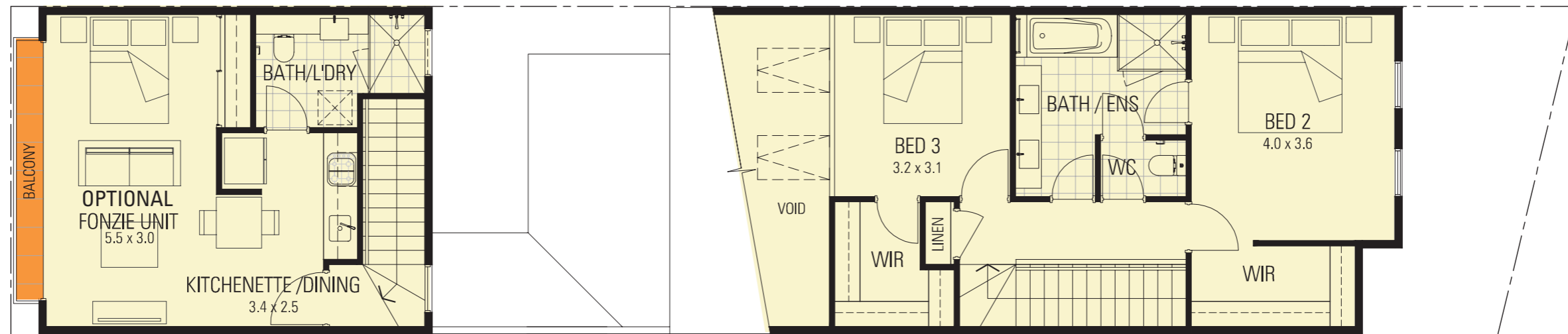
- Three bedrooms including ground floor master suite with built-in robe and single vanity ensuite
- Bedrooms two and three feature walk-in robes and shared double vanity bathroom
- Open plan kitchen, dining and living area
- Alfresco courtyard under main roof, laundry, storeroom and double lock-up garage
- Optional development approval for self-contained studio apartment with kitchenette, dining / living area, bathroom/laundry and balcony (Fonzie unit)



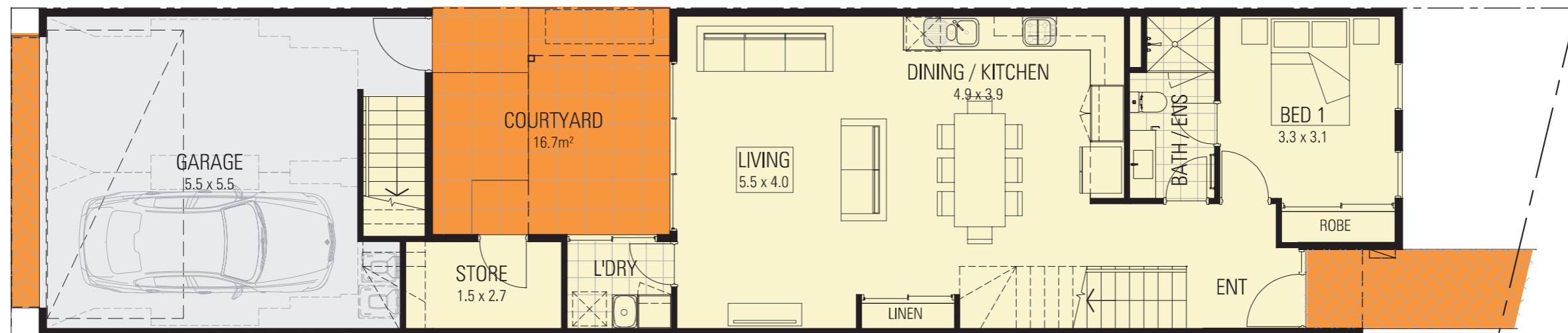
# THE PHOENIX. 25 LONGSTAFF AVENUE







FIRST FLOOR



GROUND FLOOR

**THE PHOENIX INCLUDES:**

Residence	Living Area	Studio	Garage	Store	Sub Total	Outdoor Living	Courtyard	Porch/Balcony	Alfresco	Sub Total	House Size
	128.1m <sup>2</sup>	36.3	38.9m <sup>2</sup>	5m <sup>2</sup>	208.3m <sup>2</sup>		16.7m <sup>2</sup>	4.7m <sup>2</sup>	8m <sup>2</sup>	29.4m <sup>2</sup>	237.7m <sup>2</sup>

This design includes:

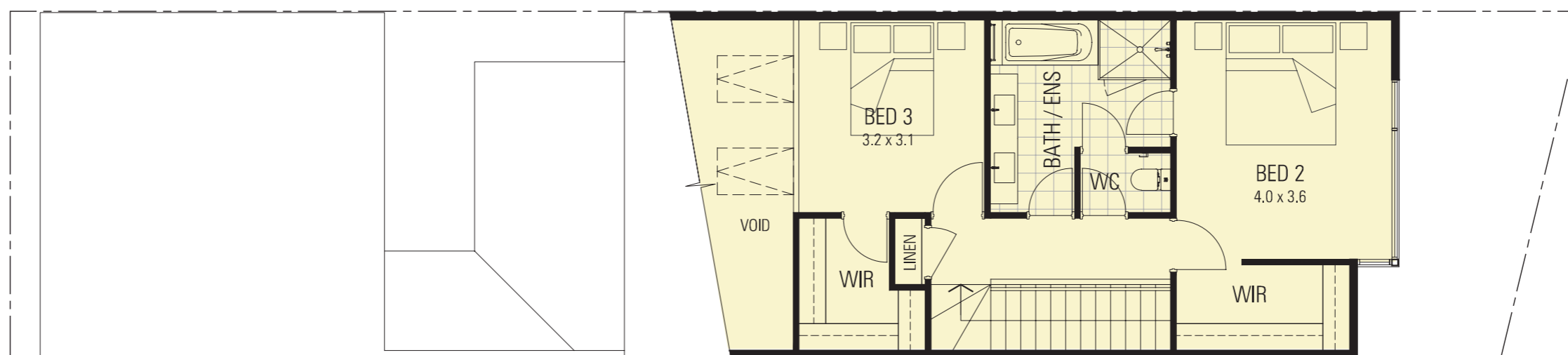
- Three bedrooms including ground floor master suite with built-in robe and single vanity ensuite
- Bedrooms two and three feature walk-in robes and shared double vanity bathroom
- Open plan kitchen, dining and living area
- Alfresco courtyard under main roof, laundry, storeroom and double lock-up garage
- Optional development approval for self-contained studio apartment with kitchenette, dining / living area, bathroom/laundry and balcony (Fonzie unit)



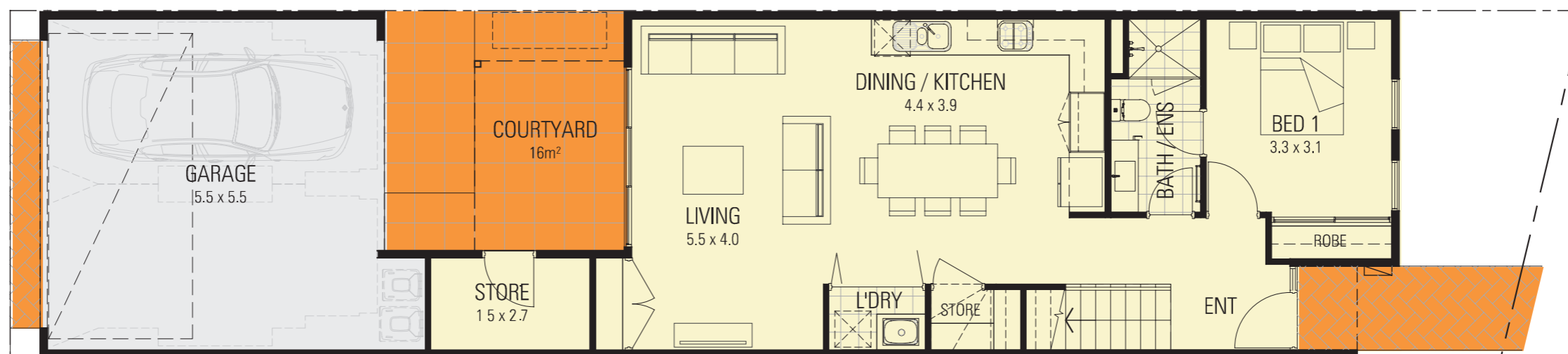
# THE OMAHA. 23 LONGSTAFF AVENUE







FIRST FLOOR



GROUND FLOOR

**THE OMAHA INCLUDES:**

Residence	Living Area	Studio	Garage	Store	Sub Total	Outdoor Living	Courtyard	Porch/Balcony	Alfresco	Sub Total	House Size
	125.7m <sup>2</sup>	N/A	34.3m <sup>2</sup>	4.9m <sup>2</sup>	164.9m <sup>2</sup>		16m <sup>2</sup>	2.6m <sup>2</sup> /N/A	8m <sup>2</sup>	26.6m <sup>2</sup>	191.5m <sup>2</sup>

This design includes:

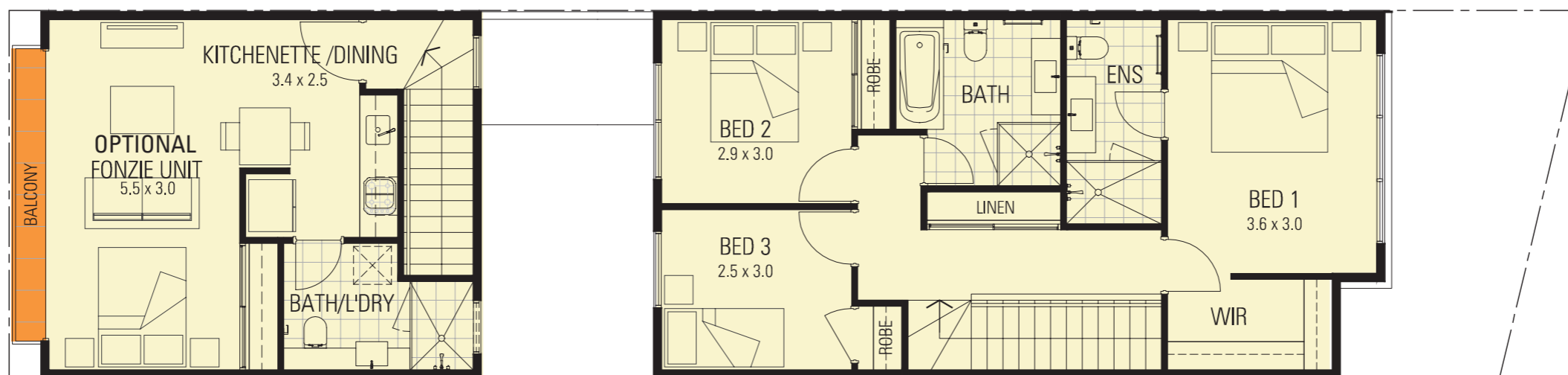
- Three bedrooms including ground floor master suite with built-in robe and single vanity ensuite
- Bedrooms two and three feature walk-in robes and shared double vanity bathroom
- Open plan kitchen, dining and living area
- Laundry
- Alfresco courtyard under main roof
- Two storage areas
- Double lock-up garage



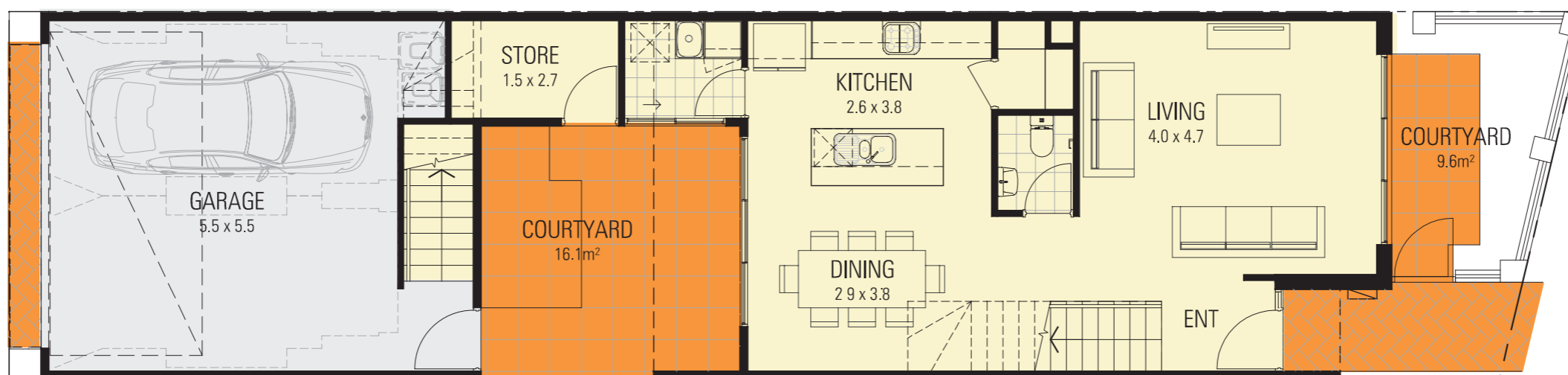
# THE MADISON. 21 LONGSTAFF AVENUE







FIRST FLOOR



GROUND FLOOR

**THE MADISON INCLUDES:**

Residence	Living Area	Studio	Garage	Store	Sub Total	Outdoor Living	Courtyard	Porch/Balcony	Alfresco	Sub Total	House Size
	110.8m <sup>2</sup>	36.3	28.9m <sup>2</sup>	4.8m <sup>2</sup>	180.8m <sup>2</sup>		25.7m <sup>2</sup>	3.5m <sup>2</sup>	5.5m <sup>2</sup>	34.7m <sup>2</sup>	215.5m <sup>2</sup>

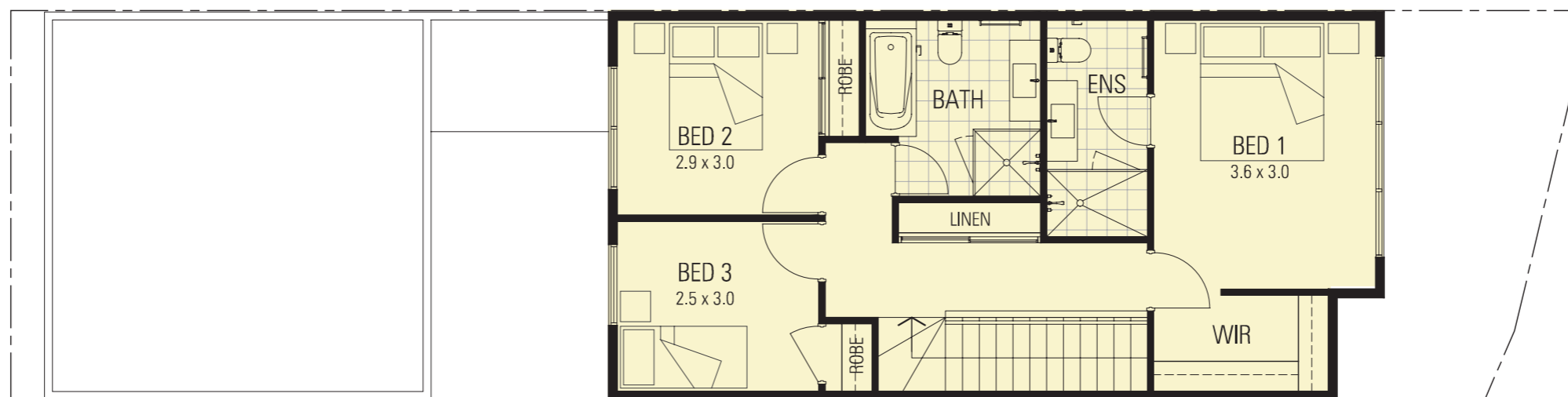
This design includes:

- Three bedrooms including master suite with walk-in robe and single vanity ensuite
- Bedrooms two and three feature built-in robes and are serviced by the second bathroom
- Open plan kitchen/dining and separate living area
- Ground floor powder room
- Two courtyards
- Laundry, storeroom and double lock-up garage
- Optional development approval for self-contained studio apartment with kitchenette, dining / living area, bathroom/laundry and balcony (Fonzie unit)

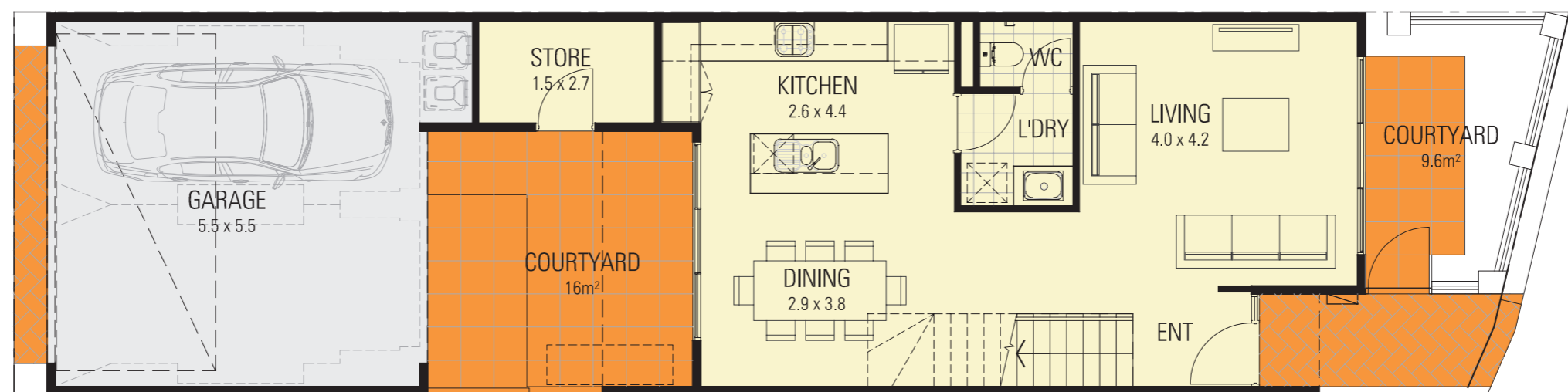


# THE MEMPHIS. 19 LONGSTAFF AVENUE





FIRST FLOOR



GROUND FLOOR

**THE MEMPHIS INCLUDES:**

Residence	Living Area	Studio	Garage	Store	Sub Total	Outdoor Living	Courtyard	Porch/Balcony	Alfresco	Sub Total	House Size
	118m <sup>2</sup>	N/A	34.2m <sup>2</sup>	4.8m <sup>2</sup>	157m <sup>2</sup>		25.6m <sup>2</sup>	1.4m <sup>2</sup> /N/A	5.5m <sup>2</sup>	32.5m <sup>2</sup>	189.5m <sup>2</sup>

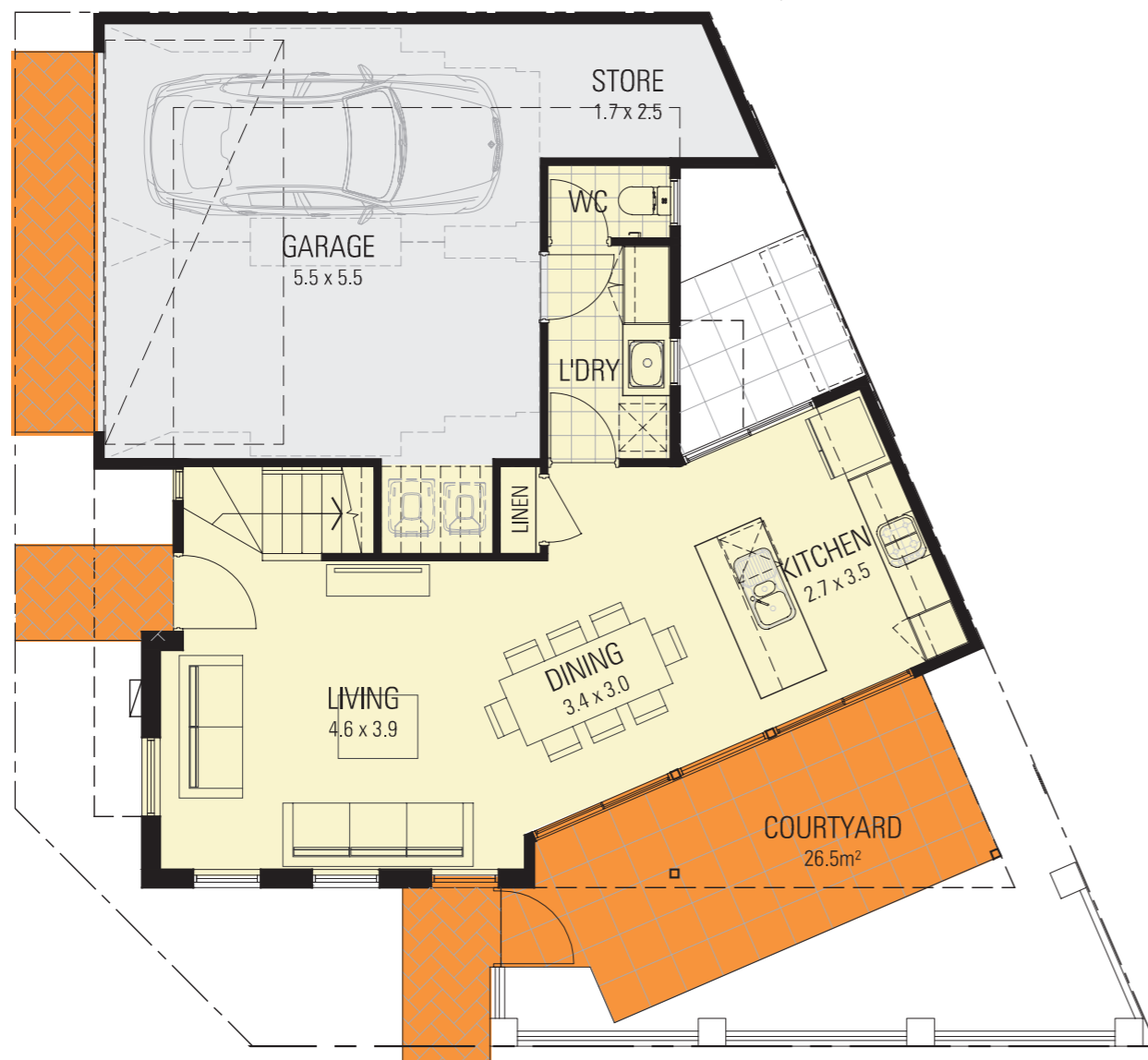
This design includes:

- Three bedrooms including master suite with walk-in robe and single vanity ensuite
- Bedrooms two and three feature built-in robes and are serviced by the second bathroom
- Open plan kitchen and dining area
- Separate living area
- Ground floor powder room and laundry
- Two courtyards
- Storeroom
- Double lock-up garage



# THE SAN DIEGO. 2 HEMI WAY





GROUND FLOOR



FIRST FLOOR

**THE SAN DIEGO INCLUDES:**

Residence	Living Area	Studio	Garage	Store	Sub Total	Outdoor Living	Courtyard	Porch/Balcony	Alfresco	Sub Total	House Size
	114.4m <sup>2</sup>	N/A	33.4m <sup>2</sup>	4.7m <sup>2</sup>	152.5m <sup>2</sup>		31.9m <sup>2</sup>	2.2m <sup>2</sup> /N/A	9.6m <sup>2</sup>	43.7m <sup>2</sup>	196.2m <sup>2</sup>

This design includes:

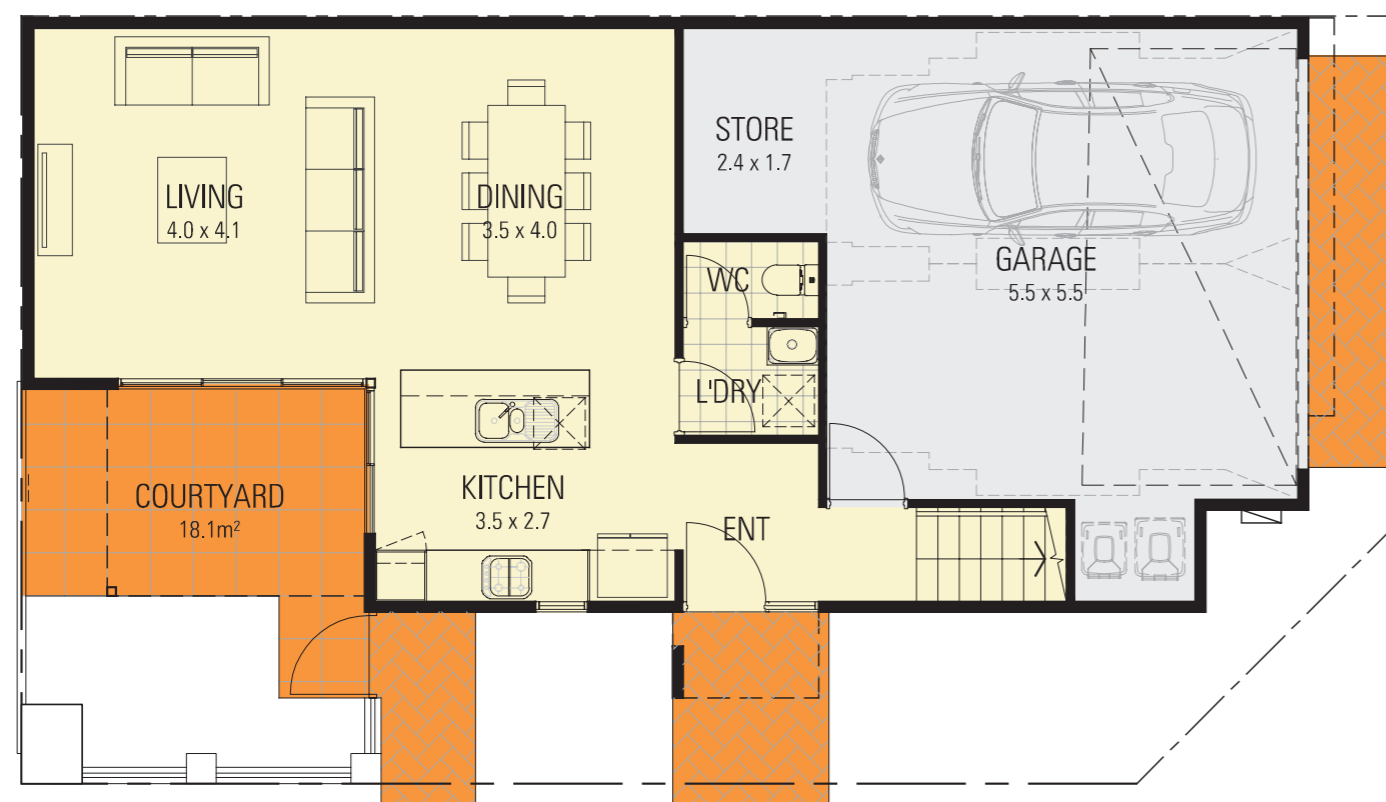
- Three bedrooms including master suite with built-in robe and double vanity ensuite
- Bedroom two features a built-in robe and bedroom three a walk-in robe
- Open plan kitchen, dining and living area

- Ground floor powder room and laundry
- Alfresco courtyard under main roof
- Double lock-up garage with storage area

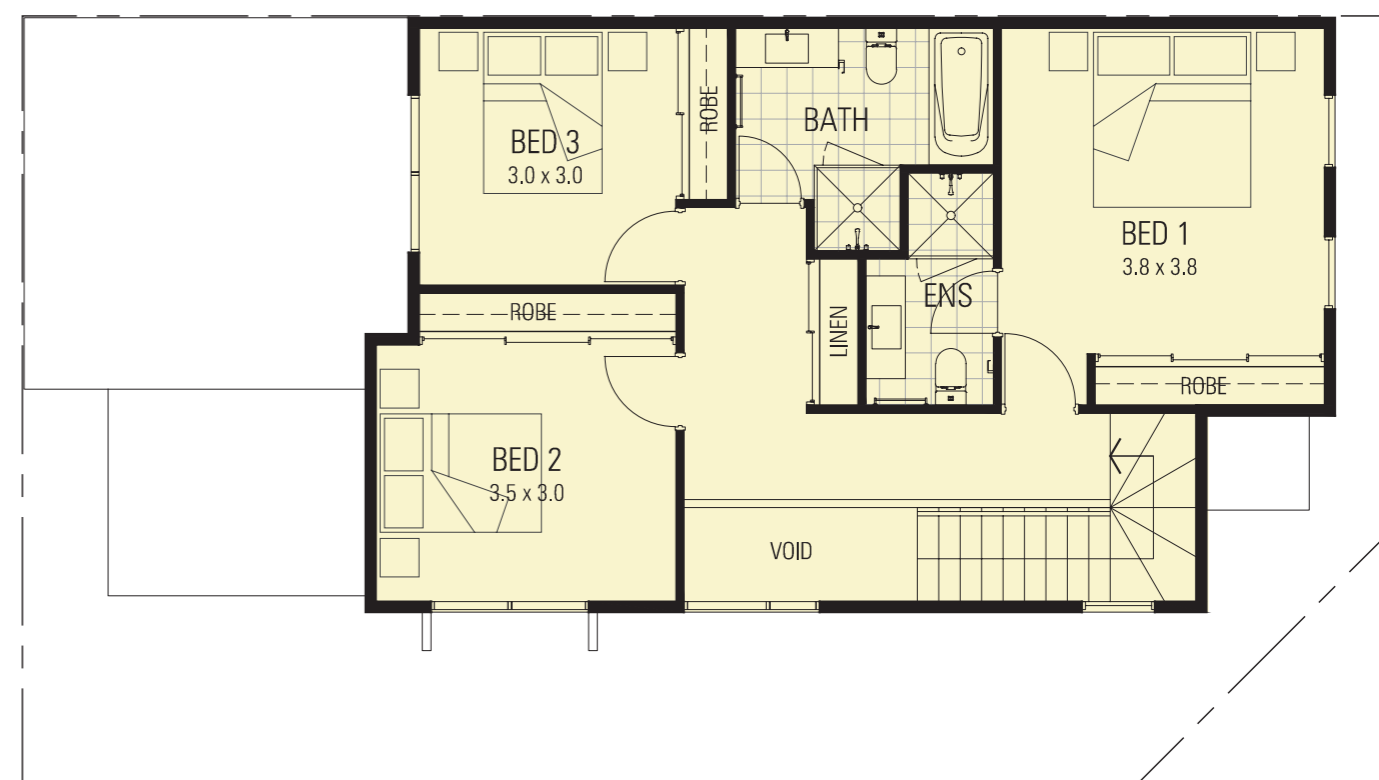


# THE MIAMI. 15 LONGSTAFF AVENUE





GROUND FLOOR



FIRST FLOOR

**THE MIAMI INCLUDES:**

Residence	Living Area	Studio	Garage	Store	Sub Total	Outdoor Living	Courtyard	Porch/Balcony	Alfresco	Sub Total	House Size
	122m <sup>2</sup>	N/A	33.7m <sup>2</sup>	4.2m <sup>2</sup>	159.9m <sup>2</sup>		18.1m <sup>2</sup>	1.8m <sup>2</sup> /N/A	7.5m <sup>2</sup>	27.4m <sup>2</sup>	187.3m <sup>2</sup>

This design includes:

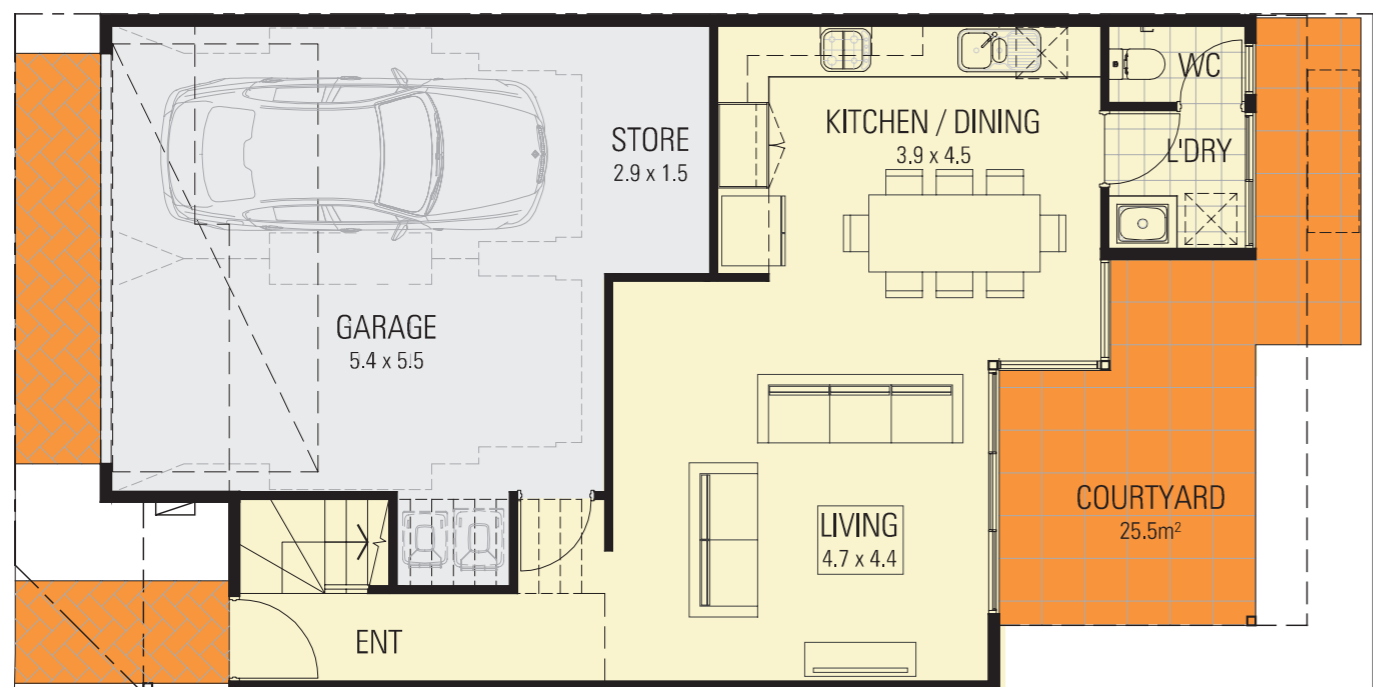
- Three bedrooms with built-in robes and two bathrooms
- Galley-style kitchen and open plan dining and living area
- Ground floor powder room and laundry

- Double lock-up garage with storage area
- Alfresco courtyard under main roof

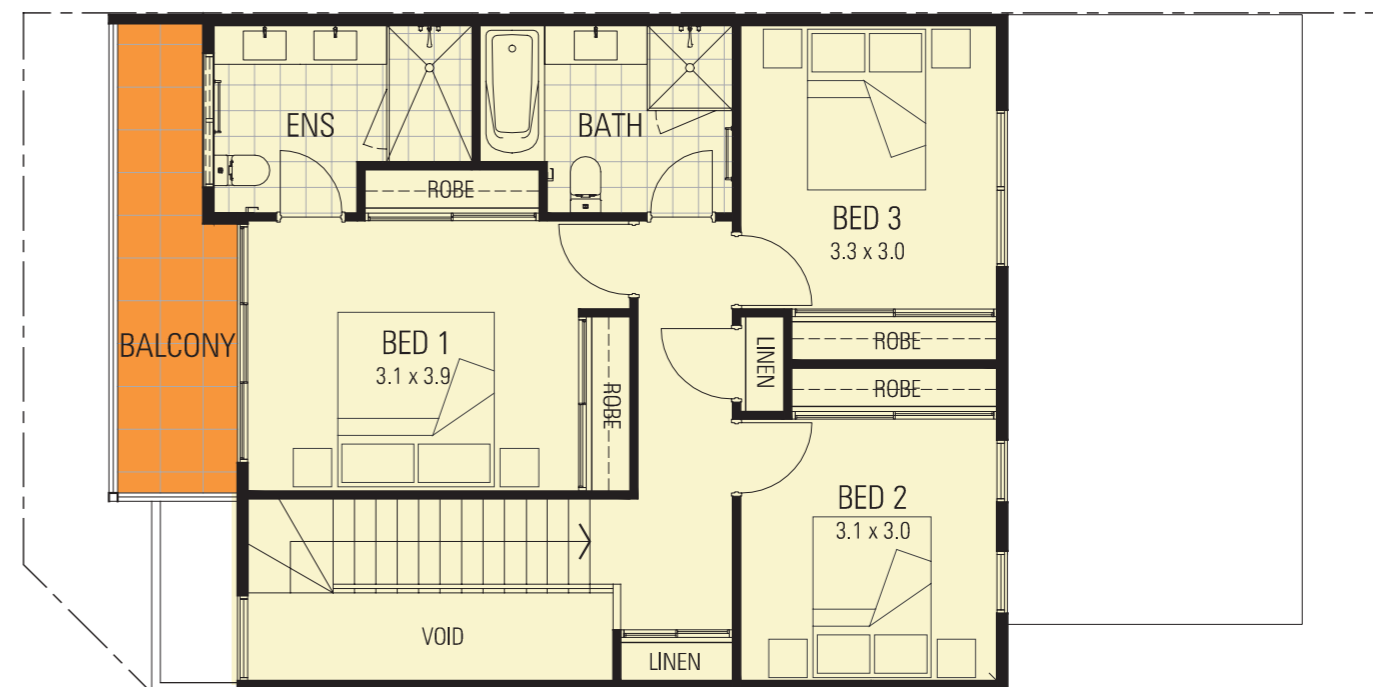


# THE DENVER. 3 HEMI WAY





GROUND FLOOR



FIRST FLOOR

**THE DENVER INCLUDES:**

Residence	Living Area	Studio	Garage	Store	Sub Total	Outdoor Living	Courtyard	Porch/Balcony	Alfresco	Sub Total	House Size
	115.2m <sup>2</sup>	N/A	33.6m <sup>2</sup>	4.5m <sup>2</sup>	153.3m <sup>2</sup>		25.5m <sup>2</sup>	9.7m <sup>2</sup>	11.2m <sup>2</sup>	46.4m <sup>2</sup>	199.7m <sup>2</sup>

This design includes:

- Three bedrooms including master suite with two built-in robes and double vanity ensuite
- Bedrooms two and three feature built-in robes and are serviced by a second bathroom
- L-shape design kitchen overlooking open plan dining and living area
- Ground floor powder room and laundry
- Alfresco courtyard under main roof
- Double lock-up garage with storage area

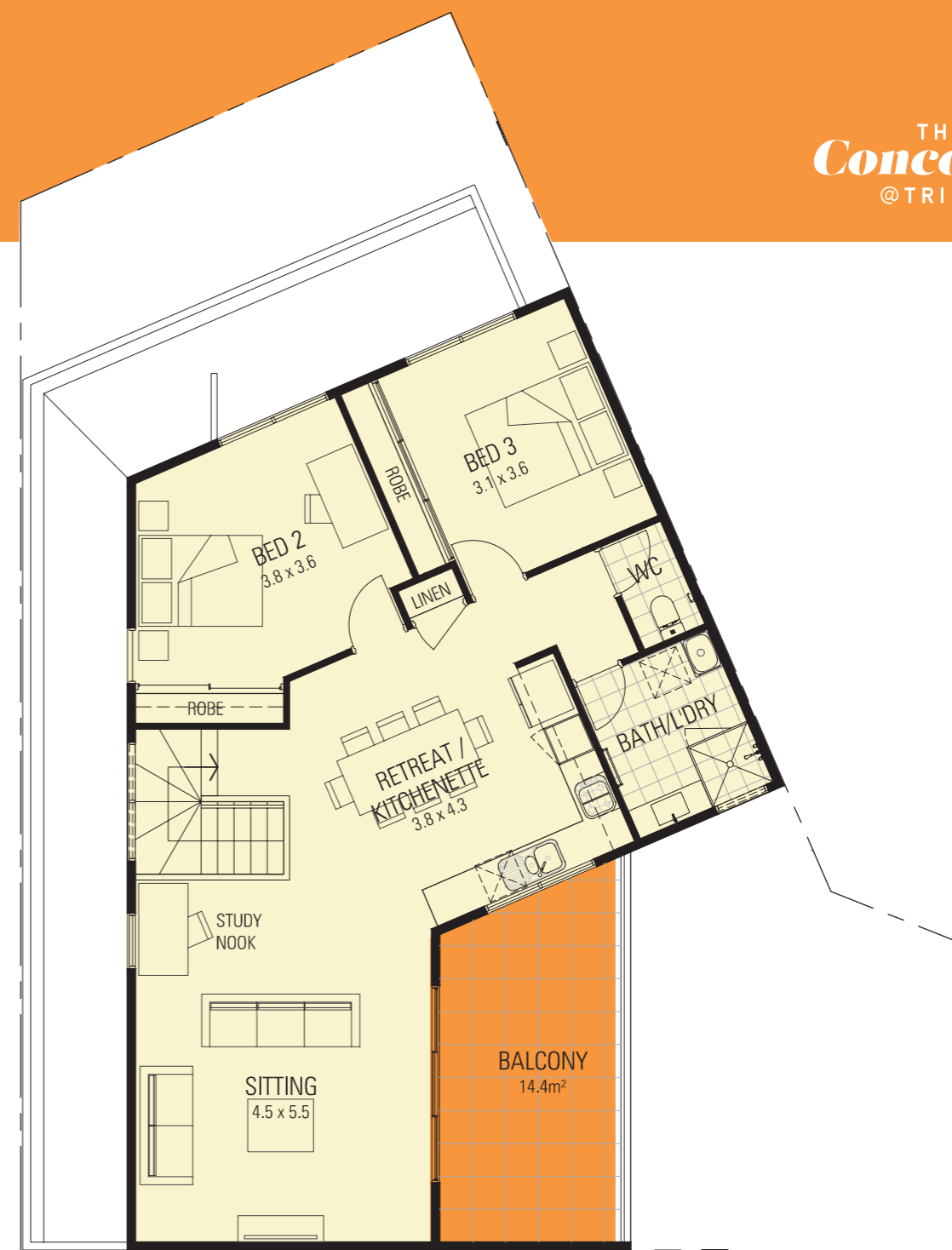


# THE HOUSTON. 5 HEMI WAY





GROUND FLOOR



FIRST FLOOR

**THE HOUSTON INCLUDES:**

Residence	Living Area	Studio	Garage	Store	Sub Total	Outdoor Living	Courtyard	Porch/Balcony	Alfresco	Sub Total	House Size
	169.7m <sup>2</sup>	N/A	33.3m <sup>2</sup>	9.6m <sup>2</sup>	212.6m <sup>2</sup>		26.5m <sup>2</sup>	27.1m <sup>2</sup>	7m <sup>2</sup>	60.6m <sup>2</sup>	273.2m <sup>2</sup>

This design includes:

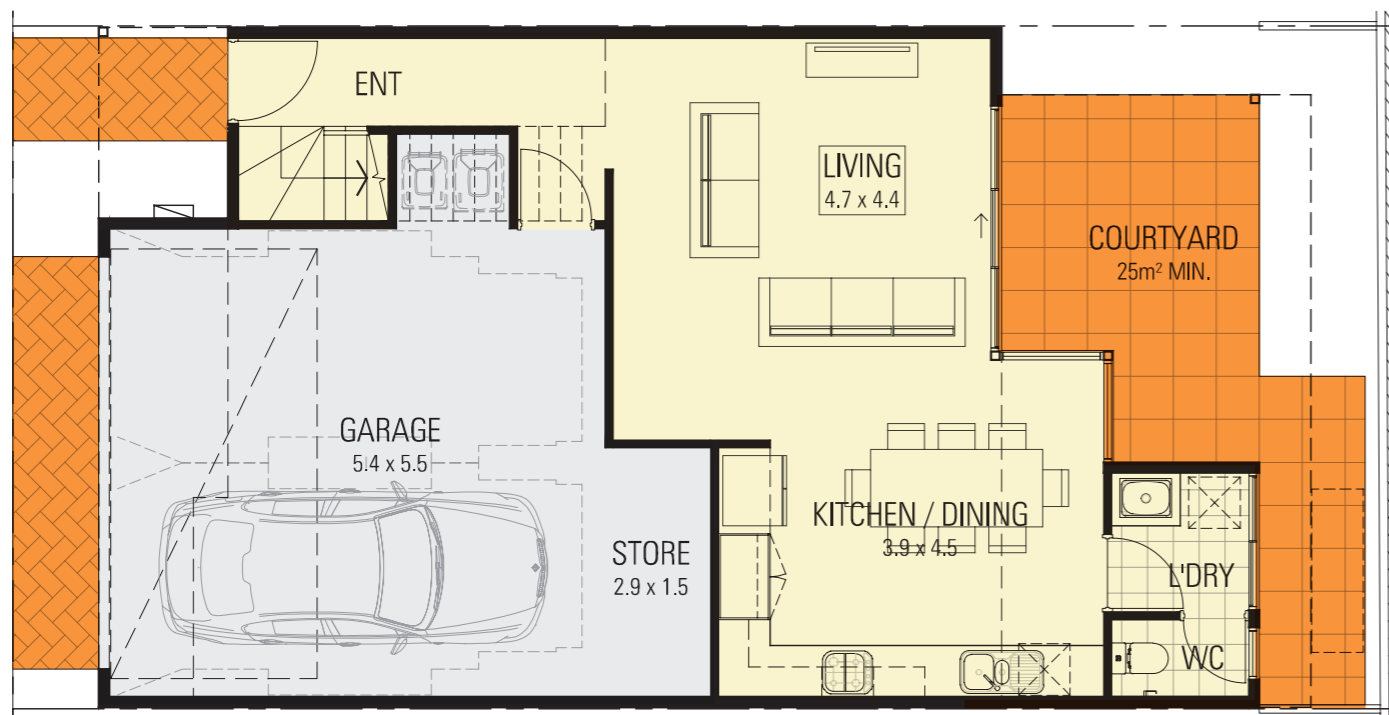
- Three bedrooms featuring built-in robes
- Two bathrooms - each incorporating a laundry
- Ground floor kitchen and open plan dining and living area opening out to alfresco courtyard under main roof
- Ground floor powder room
- First floor includes sitting/lounge room opening to balcony, large retreat area complete with kitchenette and study nook
- Two storerooms
- Double lock-up garage

The Houston is suitable for Dual-Key occupancy as the design features two separate entrances and two separate and self-contained dwelling areas across two levels.

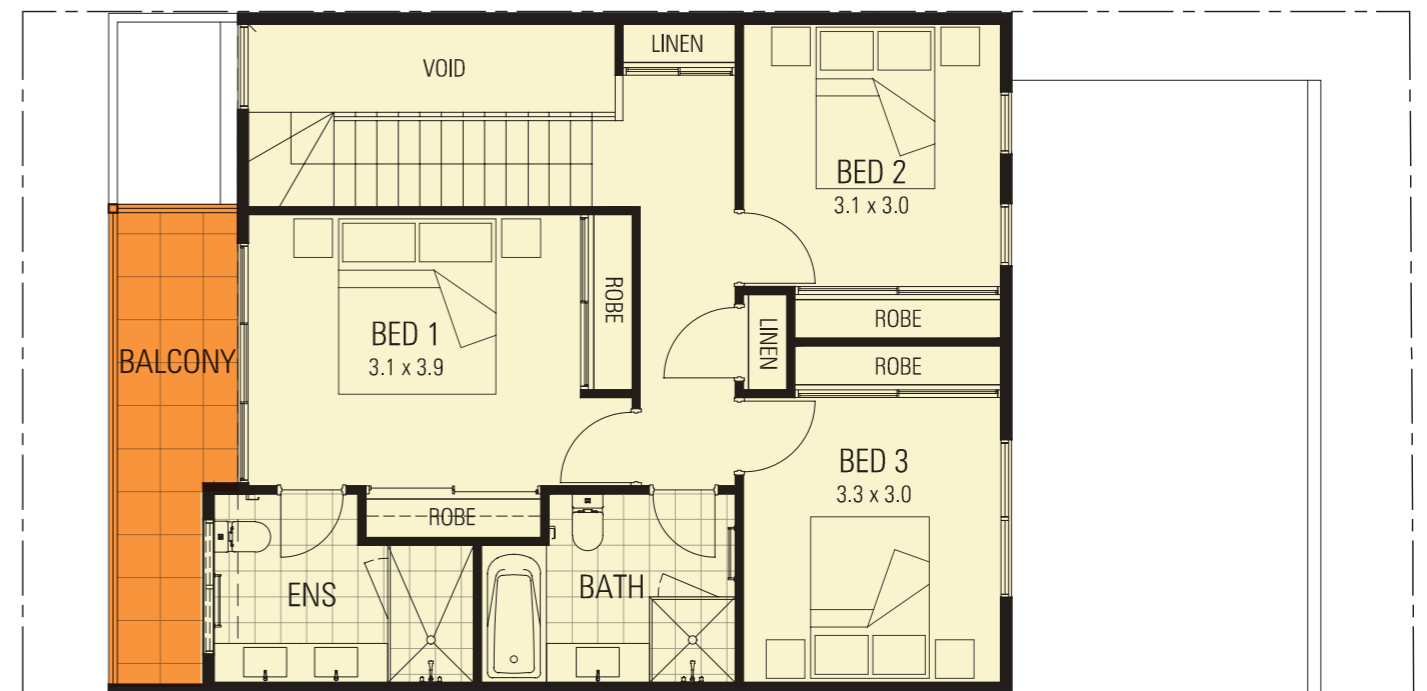


# THE BOSTON. 7, 9, 11, 13 AND 15 HEMI WAY





GROUND FLOOR



FIRST FLOOR

**THE BOSTON INCLUDES:**

MINOR VARIATIONS OVER THE FIVE BLOCKS

Residence	Living Area	Studio	Garage	Store	Sub Total	Outdoor Living	Courtyard	Porch/Balcony	Alfresco	Sub Total	House Size
	115.2m <sup>2</sup>	N/A	33.6m <sup>2</sup>	4.5m <sup>2</sup>	153.3m <sup>2</sup>		24.7m <sup>2</sup>	9.7m <sup>2</sup>	11.2m <sup>2</sup>	45.6m <sup>2</sup>	198.9m <sup>2</sup>

This design includes:

- Three bedrooms including master suite with two built-in robes and double vanity ensuite
- Bedrooms two and three serviced by a second bathroom
- L-shape design kitchen overlooking open plan dining and living area

- Ground floor powder room and laundry
- Alfresco courtyard under main roof
- Double lock-up garage with storage area

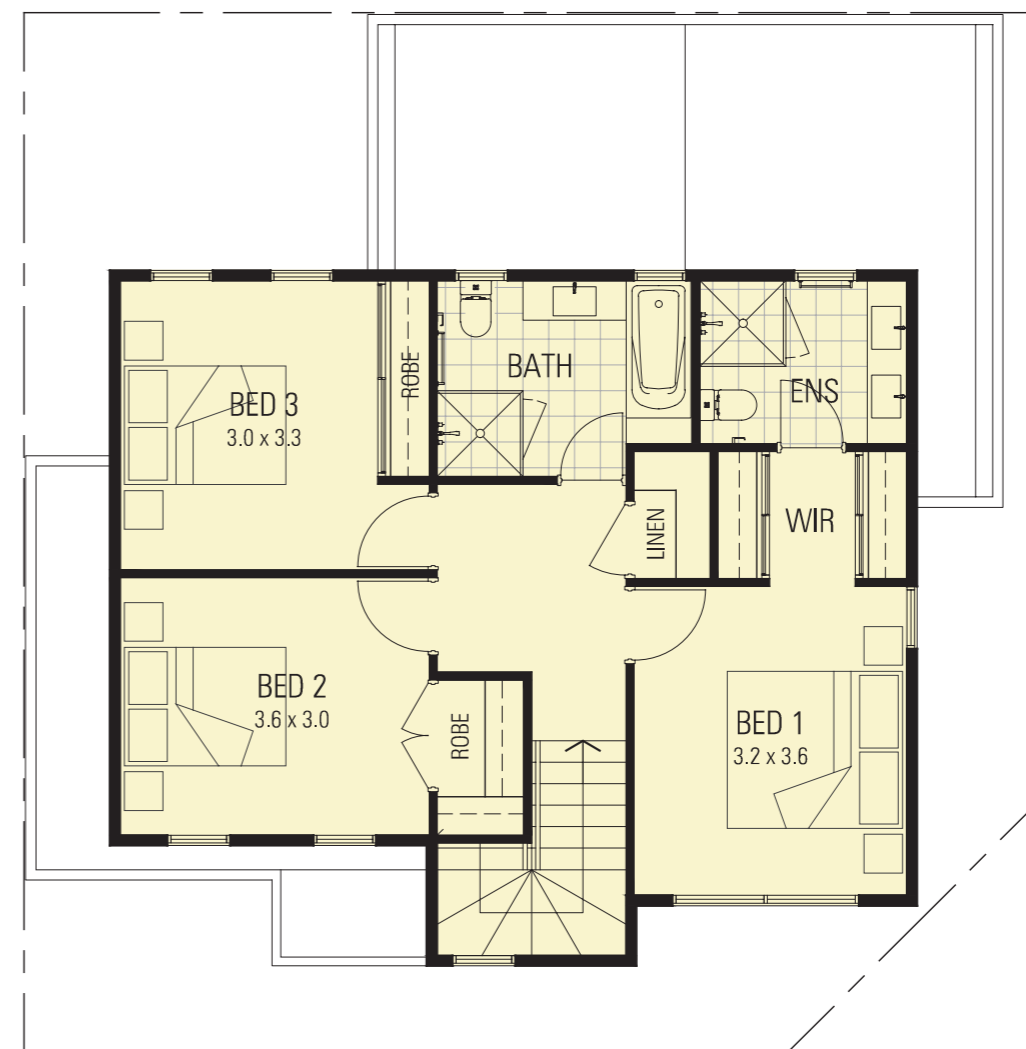


# THE ATLANTA. 17 HEMI WAY





GROUND FLOOR



FIRST FLOOR

**THE ATLANTA INCLUDES:**

Residence	Living Area	Studio	Garage	Store	Sub Total	Outdoor Living	Courtyard	Porch/Balcony	Alfresco	Sub Total	House Size
	121.5m <sup>2</sup>	N/A	31.7m <sup>2</sup>	4.7m <sup>2</sup>	157.9m <sup>2</sup>		20.6m <sup>2</sup>	1.8m <sup>2</sup> / N/A	6.5m <sup>2</sup>	28.9m <sup>2</sup>	186.8m <sup>2</sup>

This design includes:

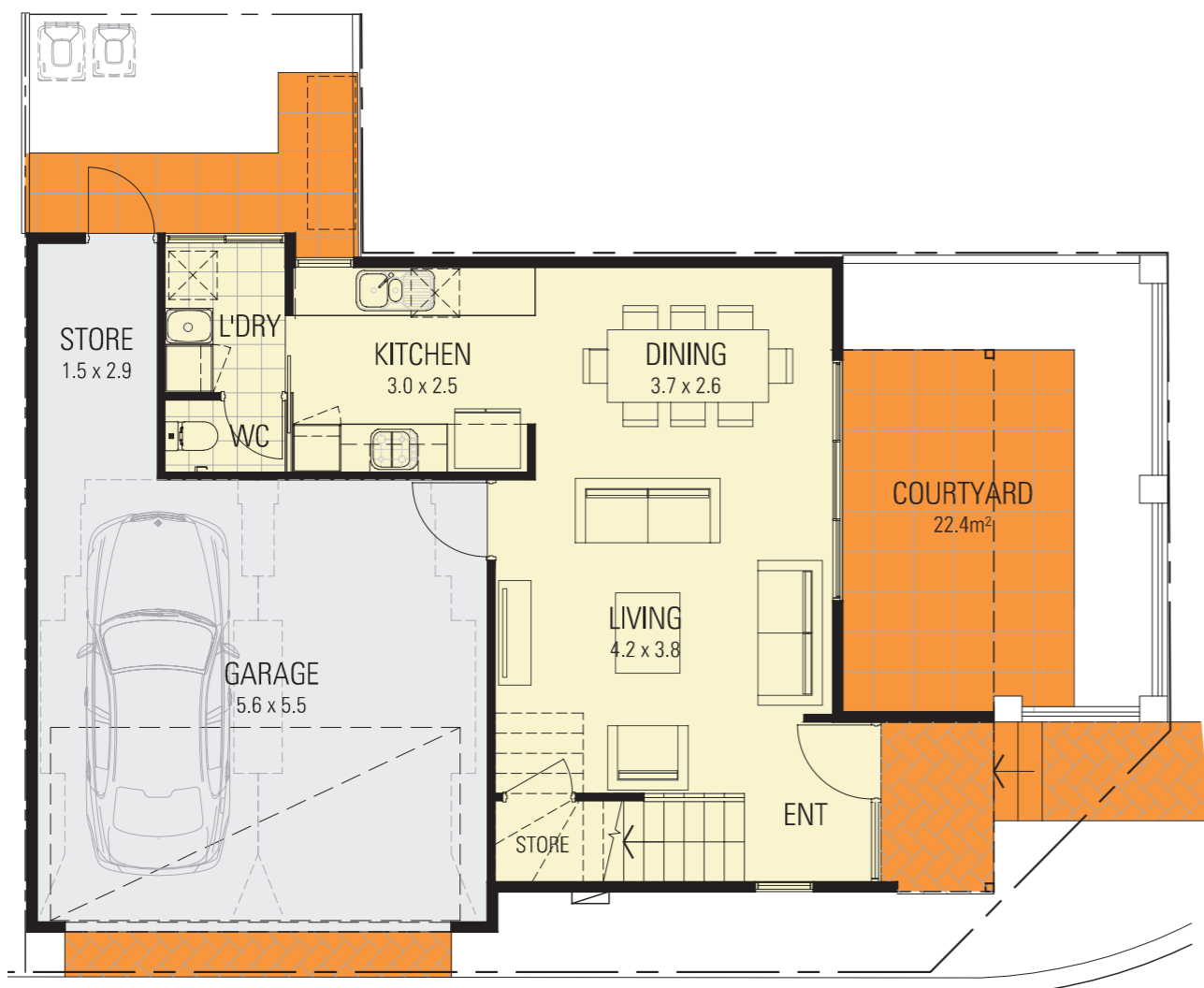
- Three bedrooms including master suite with walk-in robe and double vanity ensuite
- Bedrooms two and three feature built-in robes and are serviced by the second bathroom
- Open plan kitchen, dining and living area

- Ground floor powder room and laundry
- Double lock-up garage with storage area
- Alfresco courtyard under main roof

# THE ORLANDO. 7 ROSSI LANE







GROUND FLOOR



FIRST FLOOR

**THE ORLANDO INCLUDES:**

Residence	Living Area	Studio	Garage	Store	Sub Total	Outdoor Living	Courtyard	Porch/Balcony	Alfresco	Sub Total	House Size
	120m <sup>2</sup>	N/A	32.2m <sup>2</sup>	5m <sup>2</sup>	157.2m <sup>2</sup>		32.6m <sup>2</sup>	9.7m <sup>2</sup>	8.7m <sup>2</sup>	51m <sup>2</sup>	208.2m <sup>2</sup>

This design includes:

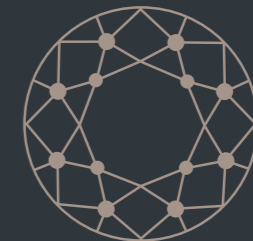
- Three bedrooms including master suite with walk-in robe and double vanity ensuite
- Bedrooms two and three feature built-in robes and are serviced by the second bathroom
- Open plan kitchen, dining and living area
- Ground floor powder room and laundry

- Separate study
- Double lock-up garage with storage area
- Additional storeroom under stairs
- Alfresco courtyard under main roof

# THE *Concourse*

@TRINITY

Designed by Architects Zuideveld Marchant Hur



**RESIDENTIAL  
REPUBLIC**  
THE MASTERPLANNERS