

TESTIMONIAL:

GAVIN CLARK
AP ENTERPRISES

“WE LOVE THIS PLOW.”

It gives you the surface clearance of a sectional but with the simplicity and ease of use of a rubber edged snow pusher.”

PRODUCT SPECIFICATIONS

LOADER MODEL:

MODEL NUMBER	PUSHER WIDTH	PUSHER WEIGHT	MACHINE HP	SNOW CAPACITY
SG12L	12'-6"	2495lbs	100+	15 yd
SG14L	14'-6"	2735lbs	120+	18 yd
SG16L	16'-6"	2975lbs	125+	21 yd

COMPACT WHEEL LOADER, BACKHOE, AND SKIDSTEER MODEL:

MODEL NUMBER	PUSHER WIDTH	PUSHER WEIGHT	MACHINE HP	SNOW CAPACITY
SG10M	10'-4"	1375lbs	60+	10 yd
SG12M	12'-4"	1495lbs	70+	12 yd



GET YOUR CUSTOM QUOTE TODAY!

visit fusionsnoplusher.com for more details



NEW FROM PRO-TECH

THE FUSION EDGE SNO PUSHER

A Revolutionary Cutting Edge, Coupler, And Shoe Design That Is The First Of Its Kind

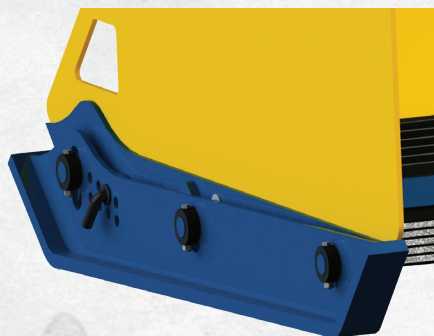
A FUSION OF INCREDIBLE SURFACE OUTCOME, EASE OF USE, AND UNPARALLELED DURABILITY.

The Fusion Edge Sno Pusher is a containment plow 25 years in the making. Since we first opened our doors in the early 90's, we have continually strived to craft containment plows that exceed your expectations. The Fusion Edge Sno Pusher is a culmination of years of customer feedback and our world class engineering to bring you a plow, that scrapes better, lasts "forever", and is easy to operate whether you are a seasoned snow veteran or new to the industry.



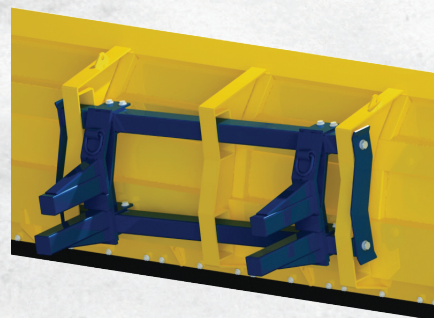
THE FUSION EDGE

- **Best of Both Worlds:** High end, abrasion resistant steel is fused directly in the rubber cutting edge - squeegee wet heavy snow and scrape hardpack
- **Flip It:** The Fusion Edge features a double edge, meaning that you can easily flip it when one side is worn and keep pushing snow
- **Quick Change:** 24" cutting edge sections allow you to easily swap out pieces if one is damaged
- **Extreme Durability:** In testing, the Fusion Edge averaged 350-500 hours of use before needing to be replaced



FAST ATTACK SHOES

- **Adjust In Seconds:** Cutting edge depth is no longer made along the entire edge of the Sno Pusher, simply pull the pin on the Fast Attack Shoe and place in the optimal position
- **Perfect Position:** Quickly make adjustments as the cutting edge wears to find the perfect attack position
- **Longest Wear Life:** The Self Leveling Shoes help you to maintain a level pushing position and are made of impact and abrasion resistant, through hardened steel
- **Swap Shoes:** Many times when you need to swap a shoe, every second counts. With the Fast Attack Shoe the three attachment collars allow you to quickly remove and replace the shoe when needed



PRO FLOAT COUPLER

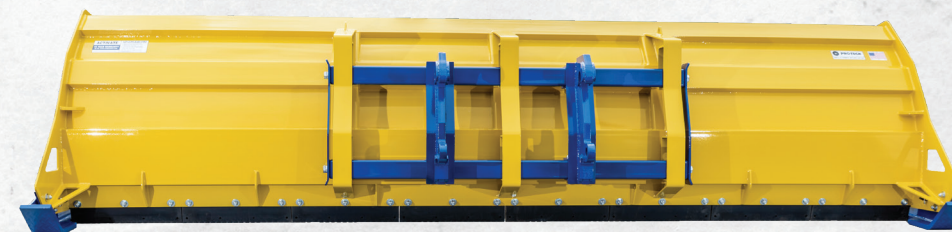
- **Full Movement:** Coupler oscillates, contouring to surface variations
- **Multiple Options:** Bolt-on coupler allows for multiple connection types as prime mover changes. Options include but are not limited to CAT IT, CAT Fusion, JRB, Volvo, Universal, and Pro-Tech's own post-style mount
- **No Limits:** Built the "Pro-Tech way" the Pro-Float coupler has no restrictions when stacking or pushing snow
- **Easy Maintenance:** The Pro Float Coupler is designed with minimal parts making any required maintenance both minimal and quick

PRODUCT HIGHLIGHTS

BACKED BY A
10 YEAR
WARRANTY



- 24" cutting edge sections
- High end, abrasion resistant steel fused rubber cutting edge
- "Razored" edges allow edges to flex and contour to surface
- Fixed cutting edge allows for depth adjustment to be made with Fast Attack Shoes



- Self leveling shoes help the plow maintain a level position
- Abrasion and impact resistant shoes are through hardened providing maximum wear life
- Adjustment holes allow for easy setting of cutting edge depth
- Bolt-on coupler (Allows for multiple connection types)
- Coupler design can oscillate and move vertically and horizontally
- Reinforced structural steel chassis provides for maximum durability

TOP 3 REASONS TO USE A FUSION EDGE SNO PUSHER:

SURFACE OUTCOME

Looking to save time and decrease salt usage?
The Fusion Edge Sno Pusher can do both.

EASE OF USE

From the snow plowing veteran to the newbie,
the Fusion Edge Sno Pusher is easy
to use and maintain.

DURABILITY

Ever have equipment fail during a winter storm?
The heavy duty Fusion Edge Sno Pusher is built
so you can rely on it through winter's worst.



GET YOUR CUSTOM QUOTE TODAY!
visit fusionsnopusher.com for more details