

Pueo

(poo-eh-oh)

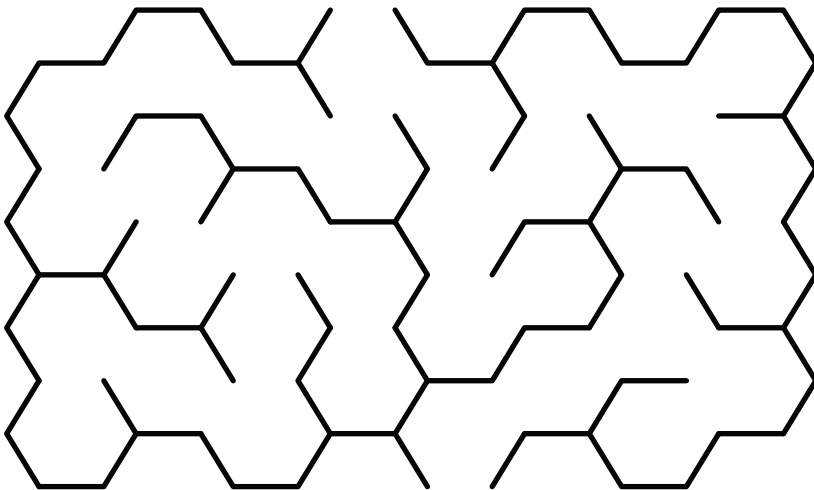
The **Pueo** is the native owl of Hawai'i.

Unlike most owls, **Pueo** are active during daylight hours, hunting the 'Iole (Rat) and other small animals.

Pueo are considered sacred and are believed to be the 'Aumakua (Guardian Spirits) of many 'Ohana.



Help the hungry Pueo through the maze to catch the 'Iole!

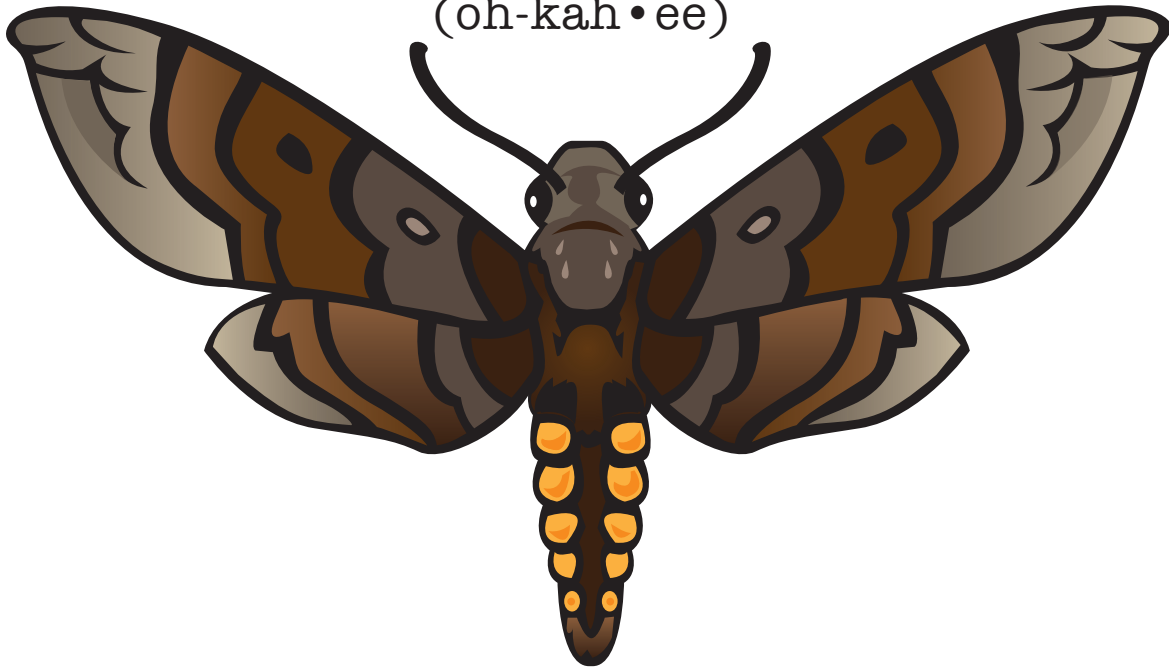


Makaiwa
KEIKI[™]
Native Creatures

www.makaiwakeiki.com
youtube.com/makaiwakeiki

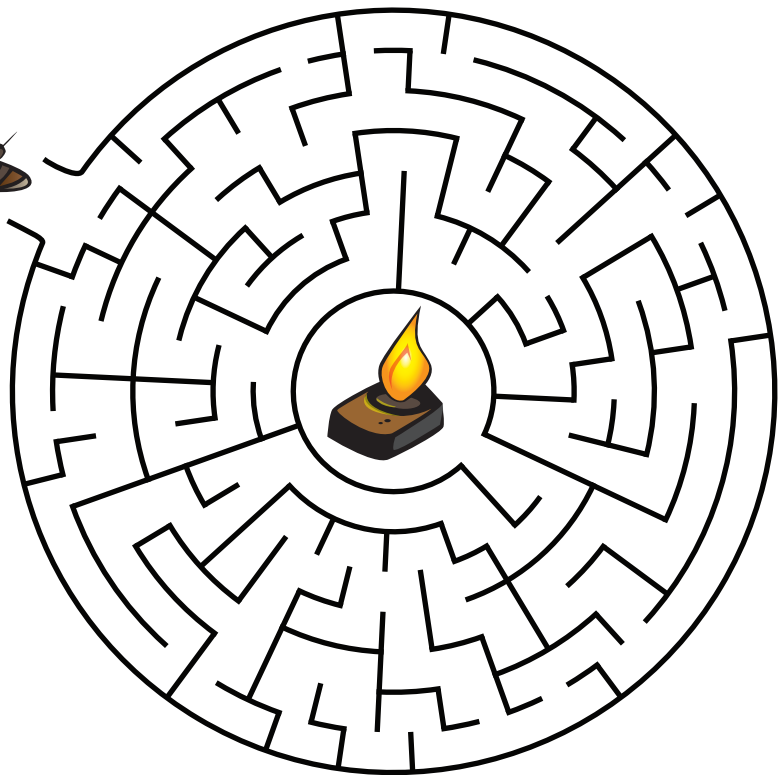
'Ōka'i

(oh-kah • ee)



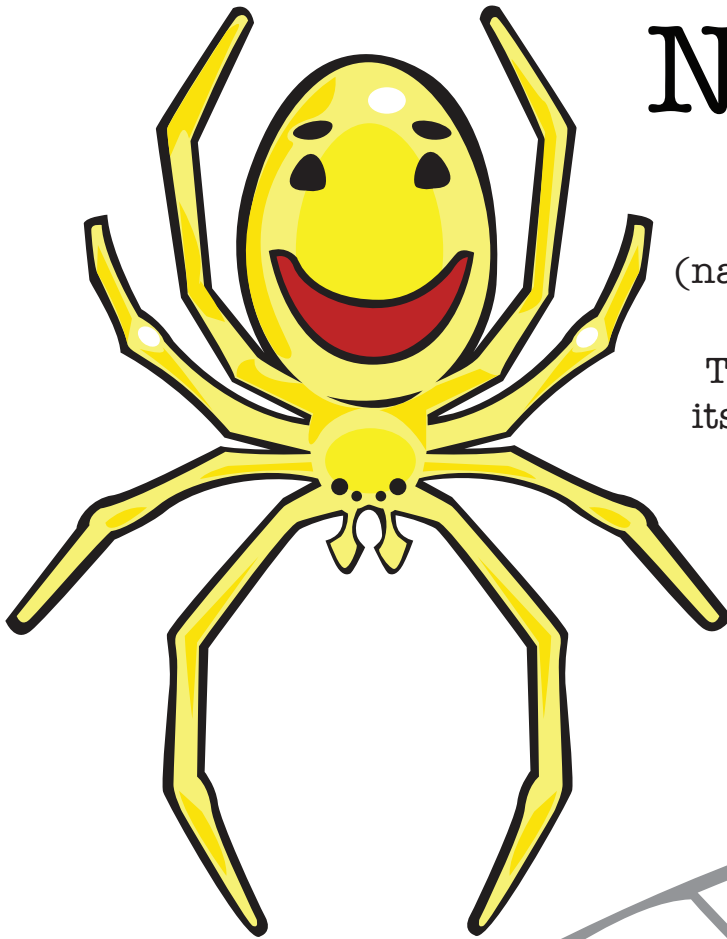
The **'Ōka'i** is the largest native insect in Hawai'i.
The wingspan of the **'Ōka'i** can reach up to 12 centimeters.
The **'Ōka'i** is endangered and can only found on
Maui, Kaho'olawe, and Hawai'i island.

*Help the 'Ōka'i reach
the flame in the
center of the maze!*



Makaiwa
KEIKI[™]
Native Creatures

www.makaiwakeiki.com
youtube.com/makaiwakeiki



Nananana Makaki'i

(nah-nah-nah-nah mah-kah-kee•ee)

This Native Spider is known for its unique pattern that resembles a Happy Face!

The **Nananana Makaki'i** live on the undersides of leaves in the rainforests of O'ahu, Maui and Hawai'i Island.



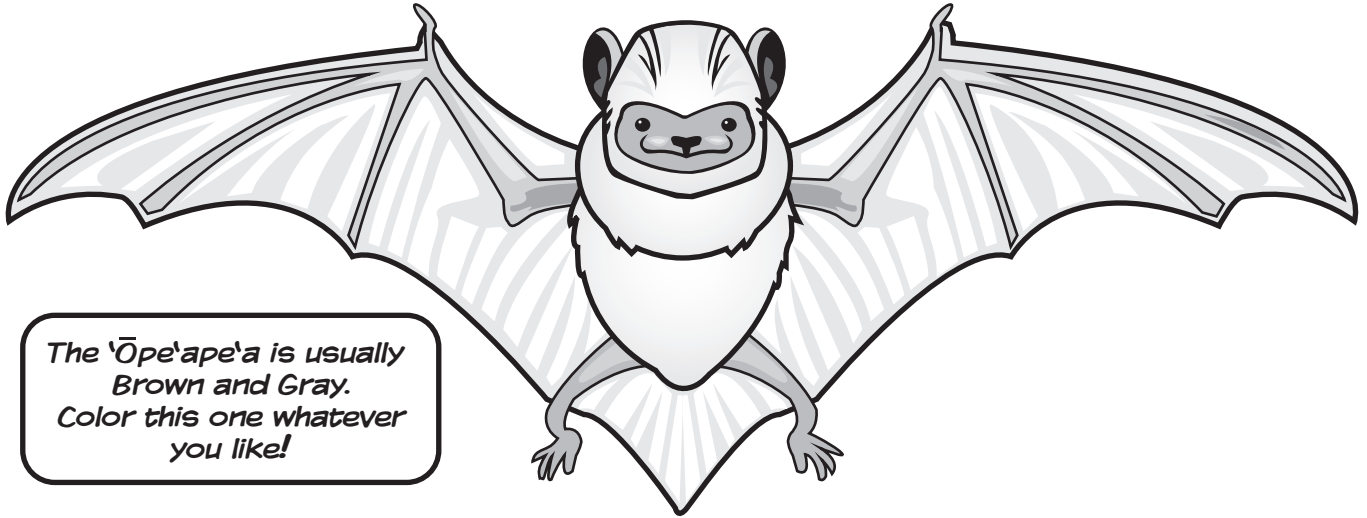
Makaiwa
KEIKI™

Native Creatures

www.makaiwakeiki.com
youtube.com/makaiwakeiki

‘Ōpe‘ape‘a

(oh-pe • ah-peh • ah)



The ‘Ōpe‘ape‘a is usually
Brown and Gray.
Color this one whatever
you like!

The ‘Ōpe‘ape‘a is the Native Hawaiian Bat.
The ‘Ōpe‘ape‘a is a solitary creature that feeds on
large flying insects at night. ‘Ōpe‘ape‘a live in the forests
and are a rare sight to see.



Makaiwa
KEIKI™

Native Creatures

www.makaiwakeiki.com
youtube.com/makaiwakeiki



Subscriber Bonus
#SUB-001 4-Pages
©Makaiwa Inc. 2016