

Pilgrim Lutheran Church and School

2016

January Congregational Meeting

Mission Goals	Pastor's Report Inreach/Hospitality Outreach Administration Finance
School	Principal's Report School Board
Finance	Treasurer's Report
Administration	Capital Campaign and Property Fundraising Pilgrim Endowment Maring School Endowment
Parish Life	Parish Life Hot Meals Block Party Global Partnerships
Worship	Worship Committee
Youth and Education	Sunday School Care Ministry Team Discipleship

Pilgrim Lutheran Church Congregational Meeting

January 31, 2016 at 11:45 a.m.

Opening Prayer		11:45
Approval of Agenda		11:48
Approval of Minutes from June 2015 Congregational Meeting		11:50
Pastor's Report		11:53
Principal's Report		12:00
Presentation of Current Mission Goals for 2016		12:05
Inreach	Renee Stuedemann	
Outreach	Theresa Sparlin	
Administration	Haley Williams	
Finance	Jason Ruger	
GPS: Where do we go from here?	Mike Suhajda, President	12:17
Capital Campaign Update	Jim Volkens	12:32
Treasurer's Report		12:38
Election of Council and Endowment Committee Members		12:43
Nominees and Election of Synod Assembly Representatives		12:48
Other Business		12:52
Closing Prayer		12:55
Adjourn		1:00

Pilgrim Lutheran Church and School
Pastor's Annual Report
January 31, 2016
Rev. Kristian Johnson



"Today this scripture is fulfilled in your hearing." - Jesus, Luke 4:21-30

If Pilgrim is known in the community, we are mostly known for three things:

- 1) our strong school
- 2) our wonderful Hot Meals program
- 3) a warm and friendly church

I say *"if* Pilgrim is known," because a lot of people I meet in the neighborhood have never heard of Pilgrim. This is indication that our potential for growth is extremely high.

Not only are my wife Anna-Kari and I both ordained ELCA Pastors, but we are also specially trained as mission developers: leaders that start new churches.

In the last five years, there are six new congregations (from various church bodies/denominations) that have been planted within 10 blocks of Pilgrim.

When I think about these church plants, who are meeting in school gymnasiums, storefronts, and theaters, I can't but think, "Wow... there is not one of these ministries with whom I would want to trade places!"

We at Pilgrim are truly anointed by the Spirit to share the good news of Jesus Christ in a multitude of ways. Our welcoming and creative worship community, our "down-home" hot meals program, and our academically excellent, servant-hearted school... most churches don't have even **one** of these things... and we have all three! And I haven't even mentioned that we own our own handicapped accessible building, complete with multiple classrooms and a beautiful sanctuary.



All of these factors contribute to the reality that our potential for growth is very high, but none of these things serve as the primary basis for optimism. The main reason our potential is so enormous is the surpassing power of the Holy Spirit! As open ourselves to the Spirit's vision for this place, God will continue to unify us in love and mobilize us to gather, prepare, and send all as leaders for God's mission in the world.

In my report entering my first full year at Pilgrim (2013), I proclaimed that year to be about **vision**. We were blessed with wonderful input from the congregation in drafting and adopting our mission statement to "Gather, Prepare, and Send" and our seven core practices.



In my report entering my second year (2014), I began my report with a prayer for **leaders** that would embody that vision. I focused much of my time identifying leaders that could help shape ministries like our prayer and care teams and our global ministry teams, which are now functioning very faithfully.

In my report entering 2015, I wrote about **discipleship** as the primary mission of Jesus. Anna-Kari and I led two discipleship groups who met on Friday mornings and Sunday afternoons. These leaders are continuing to grow and contribute: some are starting discipleship groups of their own (huddles and women's bible study), others are stepping into leadership on council, school board, and other committees, and still others are discerning how they will use their gifts to start new groups or strengthen existing ministries.

My prayer is that my work as a Pastor will always focus on **vision, leadership, and discipleship**. They are inseparable and integral dynamics in a healthy, growing church.



As we continue into 2016, I would like to lift up the word **revitalize**. Included in this annual meeting packet is a council-approved organizational chart that will help us be more clear in our mission and revitalize key teams in our common ministry. In particular, I would like to share my goals to see us strengthen three important teams to our missional present and future:



- 1) Children, Youth, and Family (Christian Education) - with greater intention to naming our greatest strengths and opportunities for growth, we will be able to establish a three to five-year strategic plan for how to grow our youth and family ministry.
- 2) Stewardship - we have a generous and creative God who is showering blessings on Pilgrim.... God is not holding back. Let's form a team that will help us channel the many resources Pilgrim has been given for good!
- 3) Parish Life - We have enjoyed significant recent success with the S.P.A.R.K. movement. Now it is time to apply what we have learned from this wonderful experience into the next phase of ministry.

I invite you to join me in revitalizing these committees, which happen to be standing committees in our church by-laws. This will happen by raising up new leaders, not demanding more of existing leaders.

I am so touched by the way Jesus ends his first sermon:

"...Today this scripture is fulfilled in *your* hearing."

Even when Jesus walked the earth, ministry depended on a community. The kingdom of God is not a spectator sport. It's never about one person. Faith happens in community and leads to action!

These powerful movements named by Jesus in his "first sermon" of Luke 4: anointing of the Holy Spirit, bringing good news to the poor, releasing the captives, recovering sight, freeing the oppressed, proclaiming God's love.... are fulfilled ***through us***.

Please pray with me: O Jesus Christ, Anointed one, thank you for being good news for us and for setting us free to live as your people for this time and place. Open our ears and hearts, that we may hear your purpose for us this year. Grow each of us and our whole church in your saving, creative, expanding Holy Spirit... our lives and our church are in your hands... We are yours. Amen.



Ministry Highlights:

Core Value #1 Praise God with All Generations Together

- Continued to include many different groups into our worship life: the Harmony Choir, the Praise Team, our Confirmation students, school chorus, Gospel kids, Sunday School, Vacation Bible School, and offerings of special music.
- Enjoyed over 15 faith testimonies throughout the year as a part of our discipleship and stewardship ministries
- Averaged 116 people in worship per week, down from 121 the year before. We said Godspeed to the Otsuka, Pellauer, Sperry, Black, and Mellot families.
- Added seven new families into membership. Welcome to the Abu- Absi, Truelsen, Campbell-Stanek, Crabtree-Nelson, Westveer, Ramos, and Bekele families! We also added eight new children and youth into membership through baptism.
- Worked with the worship committee to recruit new ushers, assisting ministers, altar guild members, and readers.
- Took an active role in working with the teachers regarding themes and scripture content for our weekly school chapel. We are walking through the book of Acts this year, and I have the privilege of planning and leading 7 chapel services throughout the year.



Core Value #2 Invite everyone to be present together in Christ

- Worked closely with our marketing team to launch new websites for our church and school, branching off of: www.pilgrimchurchandschool.org
- Attended five Chamber of Commerce Events, and assembled volunteers and worked tables at the spring Easter Eggstravaganza and the fall Trick or Treat Halloween event, each time meeting over 300 people and spreading the news about Pilgrim church and school.
- Revised our new member process, moving the classes to Sunday mornings, and found new member sponsors for each of the eight families who joined us this year.
- Laying the ground work for an active and ongoing Pilgrim School Alumni Outreach.



- A database has begun, and I organized our first annual "Alumni Sunday" on May 31st and welcomed the grandson of Pilgrim's first Principal as a guest speaker. Over 150 people, with over 35 friends and alumni in attendance.
- Thanks to the generous productivity of our school community, we passed out over 900 homemade valentines on Valentine's Day at the Montrose El stop. Wayne Heintz and I distributed over 100 crosses and prayed with many people at Wilson and Broadway on Good Friday.



Core Value #3 Lift Up Academic Excellence with a Heart

- Continue to do anything I can to support our tremendous Principal, teachers, parents, students, volunteers, and mission to provide academic excellence with a heart. I attend Tuesday mornings staff meetings, School Board meetings, PTL meetings and events, Marketing, Development, and Technology meetings.
- Attended two outdoor education retreats for 5th and 6th graders at Walcamp, leading devotions, worship, and question and answer time with the students.
- Was a member of the "Education and Christian Mission" task force of the Lutheran Schools Accreditation process that lead to us receiving another 7 years of accreditation with 9 commendations. Members of the ELEA committee reached out to me personally to express their gratitude for my enthusiastic and effective work in support of the school.
- Participated in several council-initiated strategic planning conversations around the possibility of us expanding our early childhood program onsite
- Serve as a primary resource for our Christian Studies curriculum, as we seek the best practices and the best content aligned with our values as an ELCA school, centered on Christ and open to dialogue.
- Able to secure approval for Pilgrim to become a learning site for the Ministry in Context (MIC) program for seminarians through the Lutheran School of Theology at Chicago. We are greatly benefiting from the presence of Hans and Marissa Becklin, who began learning and serving with us in September of 2015 and will continue with us until early May of 2016.



Core Practice #4 Grow in Prayer and in the Word

- So thankful for the openness we sense at Pilgrim to explore the life of Jesus. We are part of a movement that is prominent now across the country and around the world focused on multiplying leaders for God's kingdom. This work focuses on actively discerning two questions: "What is God saying to me?" and "What am I going to do about it?" These discipleship groups provide the encouragement to follow through on answering these questions with our lives. We are thankful for the new groups that have formed and the new groups that are forming. Please talk to Anna-Kari or me with any questions or interest.
- Privileged to lead a bible study for all of our teachers each Wednesday morning at 8 a.m. This is a wonderful time of learning and encouragement for me, as I pray it is for them.
- Continue to host a weekly prayer time in our home on Saturday mornings at 8:30 a.m. We have had over 20 different people participate in this time over the past year alone.
- Am glad to continue facilitating the "Explore the Bible" time for adult faith formation on Sunday mornings at 9:15 a.m. Topics from this year included Discipleship, Advocacy, Mission, Hebrew Names for God, and Church History.



- In partnership with Mrs. Andreen, our 7th and 8th Grade teacher, each 8th grader presented their own faith testimony during their last chapel service before graduating. Each of them are powerful examples of the impact Pilgrim is having on their lives, their families, and our world!

Core Practice #5 Respond with Service and Advocacy for society's most vulnerable

- Worked closely with Care Ministry Team coordinators Claudia George and Judy Daniel in training and supporting those who can do care visits to those who would greatly benefit from a visit: the sick, the elderly, those with limited mobility.
- Work closely with Janet Taylor and her associate Jackie Mokscyzki in support of our Hot Meals ministry, and our experimentation with our expansion through delivering meals through "Hot Meals Plus." I order marketing materials and attend a majority of our Saturday meal times.
- Serve as a liaison between Pilgrim and the Lane Tech "Homeland Helpers" Student Club, which is a group of high schoolers that comes every week to help serve the food and connect with our guests. For the second year in a row, the Homeland Helpers organized a Secret Santa Gift Drive, distributing over 50 gifts at Christmas to our guests.
- Along with Claudia George and Jerry Hoffman, I represented Pilgrim at our annual Metropolitan Chicago Synod Assembly in Tinley Park on Friday, May 29th... it was a lot of fun!
- Worked extensively with our Global Partnerships. Along with other families from Pilgrim Church and School, I organized a group, "Friends of Pastor Lalissa and Family" to raise support for him as he completes his Ph. D at Concordia Seminary and seeks a healthy relationship with his family. His wife, Bilisie, worked as a volunteer ministry associate for the first six months of 2015, aiding in outreach, grant writing, and alumni relations. I co-lead a mission trip to El Salvador, with 15 Pilgrimites participating in August. And I was in contact with our sponsored missionary, Rev. Dr. Phil Knutson in the Lutheran Church of South Africa, and helped ensure we met our commitment in 2015 to support his ministry.



Core Practice #6 Invest time, talent, and resources generously

- Anna-Kari and I continue to model stewardship as invite the congregation to practice stewardship intentionally. In our lives, we seek to be stewards of our:
 - TIME maintain a healthy marriage, taking one night off a week for "date night" (Mondays.)
 - TALENT maintain balance in the home between our mutual priorities to raise our own children and members of our larger community to be leaders for God's mission in the world. For example, for the third year in a row in late June, we attended Family Camp at Lutheran Outdoor Ministries Center in Oregon, IL and compiled a Bible Study Guide for the counselors to use in their summer programming.



- TREASURE practice tithing, giving a minimum of \$745 to Pilgrim a month (in electronic offerings,) not including tuition and other special gifts.

In my public role as Pastor of Pilgrim, I

- participate in the work of our Capital Campaign committee, and plan to find appropriate and effective ways to invite our new members and school families into participating in our "Growing Forward" campaign
- led a fall Stewardship Campaign "Faith Is..." that featured faith testimonies from various members of the congregation and helped elicit commitment cards from 5 new households
- Serve as a member of the finance team, which meets monthly to review our financial statements and shapes our preparation for the annual budget cycle
- Participate as a non-voting member of both the Maring Endowment Fund and the Church Endowment Fund. I helped solicit a professionally produced video to promote the Maring Endowment fund, which will go live on our website very soon.
- function as overall supervisor of all ministries and staff of the congregation. Together with Principal Comella, we restructured our administrative staff set up and hired three new personnel to help resource our ministry at a salary cost saving to Pilgrim.



Core Practice #7: Mpower homes for faith formation

- Anna-Kari and I are so thankful we get to live in such a beautiful home. We are committed to being good stewards of such a wonderful space for family togetherness and for gathering, preparing, and sending all as leaders. We host MOPS meetings, Confirmation gatherings, prayer times, nights of fellowship, bible studies, discipleship groups, committee meetings, and worship planning gatherings every month. It is our intention to model the many ways our homes are places of faith formation, discipleship, and fun!
- Vacation Bible School- I served on the team so wonderfully led by Chris Wallis. I coordinated the worship and music sessions and helped recruit youth volunteers.
- Sunday School- I continue to meet regularly with coordinator Chris Wallis and others to strengthen our children's ministry on Sunday mornings, especially as we are in the middle of the year utilizing a new schedule (having Sunday School during the 10:30 a.m. service.)
- First Communion- we had eight students receive their first communion on Sunday, April 22nd. This class continues to be such a joy to teach as I see parents and students learning and serving together.
- We had six students participate in our Confirmation Program in 2015, and three celebrated their confirmation on October 25th: Erin Franke,



Hayden Kipp, and Joseph Twohig. They did a wonderful job with their testimonies, and all have participated in worship in some way since their confirmation day!

- Youth Group - thanks to the initiative and leadership of Jonathan Valencia, we had youth participation in our Easter Breakfast, a Bowling event at St. John's Lutheran, and a Halloween movie night at the Parsonage. We will continue building a sense of community and mission among our young people with the goal of monthly gatherings in 2016.

I would like to close my report with a testimony from one of the families who participated in our First Communion class this last spring. It is a wonderful example of a leader who is gathered, prepared, and sent!



On Fri, May 15, 2015 at 12:15 PM, Jennifer Aggertt wrote:

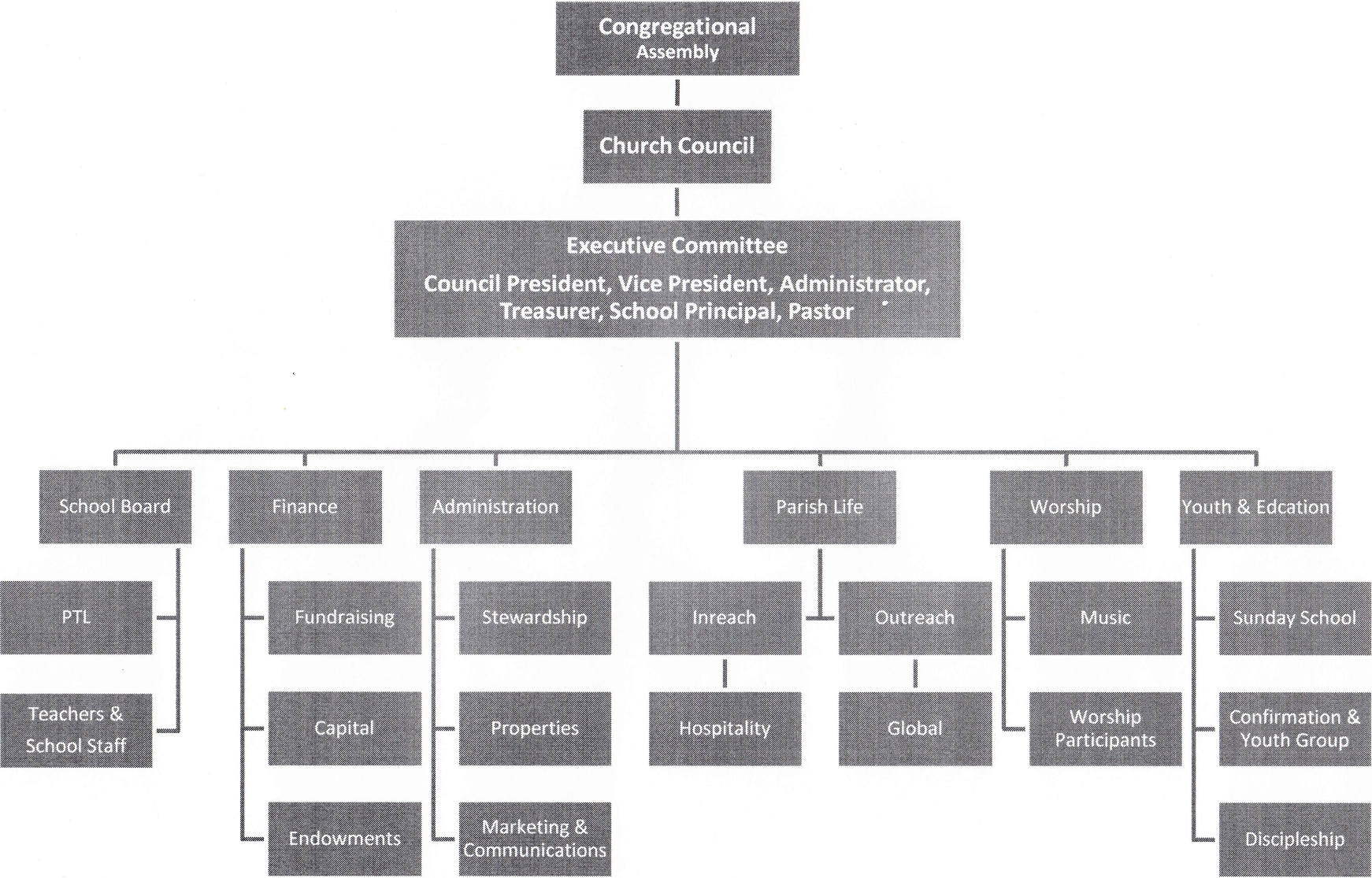
Hi Pastor,

Hope you are having a good day! I keep meaning to tell you "Thank You" for the beautiful experience we had with the First Communion Class. I was so impressed with the materials covered, the fellowship, and the fun! It was fun to see my daughter blossom and grow in her faith. It was an amazing experience.

I also wanted to share a story with you following First Communion Sunday. Through a reward point system in my daughter's 2nd grade class (in her public school), she had earned enough points to get a certificate for show and tell. Brigitte chose to take her present from her Grandmother which was a music box that plays "Amazing Grace" and has a saying on it about First Communion. She chose to tell her entire class about her First Communion class. She shared who Jesus is and that he died to save us. She shared that we are loved and that we can be forgiven. And I did not prompt her to do or say any of this! I do not think I have to say anymore, but I think First Communion has made a lasting impression on my daughter....such a lasting impression she wants to share her experience and the message!

*Love In Christ,
Jennifer*





Inreach/Discipleship Strategic Planning Annual Report

2015 Highlights

Gathering:

The Inreach/Discipleship strategic planning began with gathering people interested in discipleship activities. Over the past two years, we have had

- 31 different people participate in discipleship huddles
- 21 different people attend prayer times
- over 40 people participate in our Care and Card Ministry
- Nearly 30 different people attend the Explore the Bible (Sunday's at 9:15) time
- 10 different women attending the women's bible study.

We have also Feedback was received identifying growth opportunities and additional areas of interest.

Preparing:

Results of specific areas of focus include:

- Women's Bible Study – started this new group in the spring
- Discipleship Huddle – started one new Huddle in the fall
- Greater Chicago Great Banquet – solicited people to attend this inspiring weekend

Sending and Goals for 2016:

Each of the above 3 areas will continue with recruiting new people to the Women's Bible Study, starting another new Huddle and soliciting attendees for the Greater Chicago Great Banquet. Anyone interested in participating in any of the discipleship ministries is encouraged to do so!

Respectfully submitted: Renee Stuedemann



Pilgrim Lutheran Church and School

Outreach Strategic Planning
Report for Congregational Meeting: January 2016

Outreach Committee Members: Theresa Sparlin, Mike Suhjada, and Lynn Boecler

Last spring and summer of 2015, the outreach strategic planning committee invited members of the congregation to brainstorm and contribute to our outreach ministry goals. These meetings generated many ideas and valuable insight in which to formulate goals and objectives for our outreach ministry. The input fell into three categories: Welcoming: strengthening our church and school connections; Evangelism: building on what we have and what we do, and Pruning and Growing: researching the needs and wants of our Pilgrim community.

Our Welcoming goals include these actions steps: create greeter teams and broaden church and school communications. Specific objectives include: develop a visitor follow-up plan, install an outdoor message board, and add church members to all school communications.

Our Evangelism goals include these actions steps: market our current evangelical programs. Specific objectives include: invite Pilgrim graduates to worship, utilize our educational resources to mentor other Lutheran schools, and upload “hooks” to our worship and clips of our school ministry on social media.

Our Pruning and Growing goals include these action steps: create and distribute a survey to our community including Pilgrim graduates to access needs and wants and research or neighborhood demographics. Specific objectives include: give permission to cut programs that have run their course and encourage and support groups or individuals with new passionate ministries.

We welcome all support, input, and action to meet these goals.



Administration Report

2016 Mission Goals:

Pilgrim seeks to gather in those people who recognize that efficient office and administrative systems allow leaders, staff and volunteers to focus on ministry rather than issues related to personnel policy, office procedures and/or building maintenance.

Pilgrim prepares members and school families for a focus on learning and ministry through clear policies and procedures and through a safe, functional and aesthetically pleasing building.

Pilgrim sends students and members out into the community and the world, supported by a congregation with sound systems in place.

In 2015, Pilgrim made great strides in organizing an administrative team that is agile and able to adjust to the ever changing needs of a school and church.

The staffing in the office has changed. Halley Williams was hired as the Communications Administrator; Kathy Danner was hired as the Office Administrator and Ruth Wasiukiewicz was hired as our Business Office Manager. Each member is being cross trained and is sharing in the various duties for the church and school. The entire admin team, including Pastor Kristian and Principal Comella, meet on a weekly basis to ensure our tasks are properly prioritized and attended to in a timely manner. We anticipate these meetings to continue in 2016 and help utilize our resources in an efficient and effective manner.

Technology and software improvements made in 2015 have allowed for more efficient communications and capabilities. New computers were purchased to increase the processing power of the office. Adobe Pro was purchased to streamline communications publications. Communications have been streamlined and coordinated more effectively.

The admin team is committed, in the 2016 calendar year, to creating an organizational structure that: 1) clearly defines responsibilities and roles within the church; 2) A formal Personnel committee will be part of the organizational structure (not yet formed); 3) A Properties committee will have a centralized communication structure.



Pilgrim Lutheran Church and School

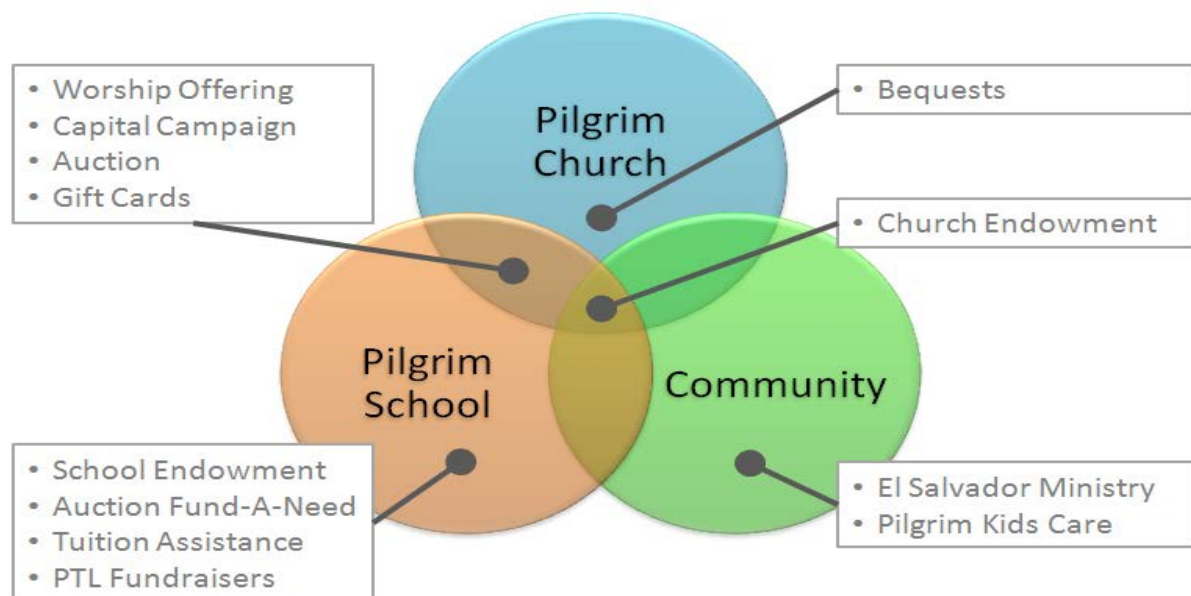
Finance

2016 Mission Goals: Fundraising

In order to achieve Pilgrim's mission, we need resources. Resources can be in many forms – the gifts of people's time, talent and expertise. Resources can also include property, equipment and money. When combined, we can use these resources to make an impact in Church, School and our community.

2016 Goals

1. Educate congregation and new members on the fundraising opportunities for Church and School. Provide transparency so that new members do not feel each month is another task.
2. Streamline and coordinate efforts between the fundraising programs. The successful creation of the Maring School Endowment fund served as an example of the benefits of focused stewardship.
3. Minimize conflicts between campaigns.



Campaign	Purpose	Church	School	Community	Coordinated by	Part of budget	Time	Time of Year											
								Jan	Feb	Mar	Apr	May	Jun	Jul	Aug	Sep	Oct	Nov	Dec
Worship Offering	Overall Budget	●	●		Pastor and Stewardship	Yes	Oct or Nov												
Capital Campaign	Physical upkeep and improvements	●	●		Capital Campaign Committee	No	Nov												
Auction	Overall Budget	●	●		Auction Committee	Yes	March or April												
Operations CIP / Gift Cards	Overall Budget	●	●		Anne Barsano	Yes	Daily												
Endowment Fund: David Maring School	Pilgrim School		●		Maring Endowment Committee	No	TBD												
Auction Fund a Need	Pilgrim School: Specific Need		●		Auction Committee	No	March or April												
Tuition Assistance	Pilgrim School: Scholarships		●		Principal and others	Yes	June												
PTL Fundraisers	Pilgrim School		●		PTL	No	Monthly during school year												
Endowment Fund: Church	Community: Grants			●	Endowment Committee	No	May												
El Salvador Ministry	Community: El Salvadoran Ministry and Trip			●	El Salvador Ministry Team	No	June												
Pilgrim Kids Care	Community: Kids charity			●	Teachers and Student Council	No	Recurring, mainly around holidays												



Principal's Report

In 2015 Pilgrim Lutheran School was leaner and clearer in its mission to serve the Pilgrim Community. The 2014-2015 school year ended with 143 students enrolled; the 2015-2016 began with 139 students enrolled from the 3-year-old Early Childhood Program through 8th Grade. A relatively stable student population has allowed the School to retain all the staff employed in 2014-2015 for 2015-2016. Pilgrim is blessed with the ministry of so many highly qualified and loving professionals to provide the high quality education within a nurturing Christian community which our mission statement promises the congregation and the community.

The ELCA Schools accreditation process corroborated that our mission is, indeed, fully at work in the School as Pilgrim earned a renewal of full accreditation with 9 commendations for excellence, highlighting the teaching staff, school administration, school governance and congregational support. A complete copy of the school accreditation team's report is available from the school office upon request. The conclusion of the report resulted in a number of recommendations for the continued improvement of the delivery of instruction and for school administration and government. The school staff, the Board of Education and the Accreditation Team Chair Halley Williams, are all to be commended for the excellent work that they have done for the accreditation on behalf of the students and their families and in service to the mission of the School.

We continue to affirm our strong resolve to serve the mission of the congregation and thus, the mission of Jesus is solid and strong. Through education of the whole child, we have embodied the congregation's mission to gather, prepare, and send. This report highlights the most important ways we have done this.

At the close of the 2014-2014 school year, Pilgrim School "sent" 14 graduates to a variety of high schools. The 2015 graduates are:

Karla Biery, Jones College Prep, a selective enrollment CPS school;
Sevan Buechele, Von Steuben High School Honors Program;
Ian Daboul, Von Steuben High School Honors Program;
Beth Gillespie, Regina Dominican High School; Service Hall of Fame
Audrey Howaniec, Whitney Young College Prep, a selective enrollment CPS school; Suhajda Sports Award
Hayden Kipp, Niles West High School; Service Hall of Fame
Campbell O'Connor, North Side College Prep, a selective enrollment CPS school;

Rachel Santana, Niles West High School;
Addie Schlensker, Whitney Young College Prep, a selective enrollment CPS school; Kiehm Award for Excellence
Joe Twohig, Whitney Young College Prep, a selective enrollment CPS school;
Kris Ushijima, North Side College Prep, a selective enrollment CPS school;
Kevin Zegler, Notre Dame High School for Boys; Service Hall of Fame Award
Bridget Zegler, Resurrection High School for Girls;
John Zegler, Notre Dame High School for Boys.

In addition to these graduates, a number of 6th Grade students were accepted into CPS Academic Centers:

Mikus Bierdnardski, Lane Tech;
Becca Boogert, Lane Tech;
Adrian Colon, Lane Tech;
Noah Tomko-Jones, Lane Tech; and
Jonas Vriend, Lane Tech.

Other "sendings" from the school include:

1 student moved out of country;
7 students moved out of state;
4 students moved to the suburbs;
2 students transferred to CPS magnet schools;
10 students transferred to neighborhood CPS schools; and
2 students left to be home-schooled.

Each of these children and their families leaves Pilgrim marked with the sign of Christ and is well-prepared for the next step of their academic careers.

In 2015, Pilgrim said farewell and Godspeed to Cheryl Saiki, after over 30 years of service to Pilgrim School. Mrs. Saiki is a Pilgrim School Alumni Parent and congregation member. Mrs. Saiki now serves all the students in Chicago's Lutheran Schools through her new position at the Chicagoland Lutheran Educational Foundation (CLEF). Everyone at Pilgrim School thanks Mrs. Saiki for her dedication to Pilgrim and to the success of all students in need of learning assistance services. We also wished Ellen Twohig, our school office operations manager, farewell and Godspeed. Mrs. Twohig was a Pilgrim School parent for 16 years, served on the Pilgrim Board of Education, and was Chair of the BOE for many years.

Thanks go to Mrs. Twohig for work in the school office and for her years of leadership at Pilgrim. Finally, we send our best wishes to Dr. Jennifer D'Agostino, who taught our upper grade chorus for the past two school years. She brought the chorus to a new level of excellence. We wish her well as she has taken a college teaching position in Ohio and is expecting her first child.

In order to prepare students better for the challenges of education and the world beyond, Pilgrim has initiated several projects that have improved the school's academic program and the school's physical plant. Physical plant improvements have been accomplished through the generosity of congregational giving to the Capital Campaign and through the extraordinary leadership of school parent and BOE member, Tricia Koning-Llewellyn. Capital Campaign money paid for a new school roof and the installation of new carpet squares throughout the school. Ms. Koning is leading Pilgrim in two projects: one to update the Annex in Maring Hall; and the other a three-year plan to renovate Pilgrim play spaces. Ms. Koning's efforts helped to raise over \$40,000 and resulted in the completion of the Phase I of playground renovations, which included demolition and resurfacing of the main playground, installation of new fencing and gates; installation of a climbing wall and rubber tile play surface. This project will continue into 2016 and 2017 with future renovation of the Early Childhood play-deck planned.

In addition to physical improvements to the building, the school staff continues to refine and improve the academic program of the school. The 8th Grade math program has returned to Pilgrim, and Mrs. Raabe is developing individualized instruction for each of the students. All teachers continue to pursue how to implement the teaching of academic vocabulary in each classroom for the core subjects of Math and Reading/English/Language Arts. Those teachers responsible for science instruction are looking for ways to adapt our current science curriculum to the Next Generation Science Standards (NGSS) adopted by the State of Illinois last year. All teachers are working to integrate technology more fully into each subject area both through the use of new devices and through the use of technology programs such as BrainPop and IXL. Teachers have received additional training in the use of interactive whiteboards and students now have access to 15 new Chrome books.

Teaching assignments have also shifted to support the needs of students. After many years of teaching 1st grade math and 2nd grade reading, Mr. Knuth is now a co-teacher in the Early Childhood room, where he has a vision for implementing Reggio Emilia learning theories. Mrs. Andreen has taken the responsibility for 1st grade math and Mr. Yearick is now teaching 2nd grade math. Pilgrim is hosting 6 interns from The Chicago School of Psychology to support instruction in the 1/2 Homeroom, the 4/5 Homeroom and the Early Childhood classroom. We are providing learning assistance support to special education students through Aspire and we continue to access services through Genesis for social work needs and through Catapult Learning for tutoring. Finally, we have welcomed a new band teacher, Ouida Zaporta, for the Upper Grades and also a new chorus teacher, Rebecca Sorensen.

In all other ways, our staff continues to provide the best learning experiences possible to teach to the whole child. Not only is this evident in our classroom instruction, but also weekly chapel and service learning opportunities. Pilgrim students continue to enjoy quality learning experiences through field trips and through our partnerships with St. Paul's/Dorchester and Pablo Casals schools. We are called to renew and reinvent our partnership with Colegio Luterano in El Salvador. We feel especially supported in all these efforts through the work of the Parent-Teacher League and through the Pilgrim Board of Education and through all of our parent volunteers. Pilgrim students are learning how to be citizens of our community and our world in ways that are not possible in many other schools.

Finally, Pilgrim has gathered new faces to become part of the Pilgrim family. We welcomed 35 new families to Pilgrim, filling seats in EC and PK through 8th Grade, accounting for 35 new students at Pilgrim, plus adding another 4 students from returning families. We are blessed to serve these families. In some ways, the growth in students is attributable to an aggressive marketing campaign that includes revised and expanded print materials, greater exposure at local school fairs, and active participation in community events such as the Von Steuben Day Parade, the Pilgrim Block Party and the Irish Christmas Festival. In other ways it represents the expansion some Pilgrim programs. The first year of a Pilgrim Summer Enrichment Program aimed at children ages 4 through 9, attracted several new students to our Early Childhood Programs, as well as drawing families into the congregation.

Mrs. Calderone, our Before and After School Program Director, did a great job with the Summer Enrichment Program in 2015 and she is going to run Summer Enrichment again in summer 2016.

As 2016 begins, Pilgrim School continues its efforts to fulfill the mission of the Pilgrim Congregation and meet the needs of the various communities surrounding Pilgrim. We acknowledge some significant challenges for the coming year: 1. Marketing our school to maximize enrollment and ensure the financial security of our operations; 2. Expanding our service learning and strengthening our relationships with the people whom we serve; 3. Diversifying our school population and offering seats to students of all races, ethnicities and socio-economic statuses; 4. Ensuring just compensation for all our staff; and 5. Equipping our building for maximal use of its resources for the best learning environment for all students. An on-going discussion among the school staff, the Board of Education and the Congregational Council has been ways to expand the current Early Childhood program at Pilgrim. We look to the guidance of our many educational experts in the congregation and grace of the Holy Spirit to guide the school in this discussion and possible change in how Pilgrim School serves the congregation and the community. The Pilgrim School staff thanks you, the Congregation, for all your support as we reach for all of these goals. With the power of your prayer and the grace of the Holy Spirit, we know that we always meet the goal of academic excellence with a heart.



**School Board
Annual Report for 2015**

The school board was obligated to increase tuition for the second year in a row in order to address a low enrollment, increase in expenses and a subsequent budget deficit. Motions were approved for an increase in both the tuition and school fees for the 2016-17 school year. The Board endeavors to find a balanced approach to the income requirements of the school over the upcoming years, in an effort of minimizing undue hardship to our families while maintaining resources for a competitive institution.

Our efforts towards marketing and maximizing enrollment will be a focus of the upcoming year. Maintaining an optimum and diverse student population is paramount to sustaining both the budget and the unique culture of the school.

The school completed our 7-year ELEA accreditation, A School Improvement plan was developed during the process and will serve as a guide for establishing priorities, a checklist for improvements, and a reminder of the quality education that is provided by the staff and faculty.

The first phase of the playground renovation was completed prior to the beginning of the 2015-16 school year. Subsequent phases of development for the upgrades to the play deck have begun planning and a scheme will be proposed for execution during the summer of 2016.

The Board saw the departure of several members, including Marcia Frellick, Lara Otsuka, and Stephanie Weber. Nancy Liljedahl stepped down as Chairperson after several years of dedicated service. The Board welcomed new members in August 2015, including Jeff Grott, Bianka Hardin, and Eric Crabtree-Nelson.

Chad Smith was nominated as Chairperson by the Board and assumed the role in January 2016.

We are confident that the continued support of the congregation, dedication of our faculty, and commitment of our community of parents will foster an enriching environment for our students and the culture of Pilgrim Lutheran will continue to thrive.

Respectfully prepared and submitted by,
Chad Smith
School Board Chairperson



Pilgrim Lutheran Church and School

2015 Treasurer's Report

Dear Members and Friends of Pilgrim Lutheran Church and School:

This past year continued to be a year of transition. I stepped into the role of Treasurer in July and we welcomed a new office manager, Ruth Wasiukiewicz, in October. Ruth has jumped in and quickly learned Pilgrim's accounting system and has been invaluable in helping me with all financial statement preparations. Thanks also to Pastor Kristian, who along with Mr. Comella, have provided me guidance through this process.

Our school program continues to be a shining light in our community and attracts a diverse group of families who benefit from our program. As you recall last year we faced a deficit and with your support we were able to finish the year strong and meet our budget. For 2015, Pilgrim has continued to be strong and steady. Our enrollment has steadily climbed throughout the school year and through Pilgrim's continued generosity we have continued to meet our financial commitments.

2015 started our Growing Forward Capital Campaign Fund. Because of your continued commitment and giving we were able to complete Phase I of the Growing Forward Campaign and provide our church and school with a brand new Play Lot equipped with a new climbing wall and renovations inside the school.

As a reminder, due to last year's change to the budget structure we aren't going to end the budget year until June 30, 2016. As we get closer to June more information will be provided for preparing the 2016 -2017 budget.

As always, please remember the convenience of the electronic giving program. It is safe, secure, and a convenient way to help Pilgrim Church and School.

Respectfully submitted,
Michael Dooley, Treasurer



Attachments:
Growing Forward Report
Balance Sheet 12/31/2015

Pilgrim Lutheran Church and School

Growing Forward Capital Campaign December 2015

	Projected through 12.31.17	Through 11/30/15	December	YTD	OVER (UNDER)
Income	212,746.80	114,926.41	2,885.00	117,811.41	(94,935.39)
Expenses					
Administration	7,000.00	0.00	0.00	0.00	(7,000.00)
Mission Gifts Grants	25,000.00	6,515.00	9,790.00	16,305.00	(8,695.00)
New Roof on School	60,000.00	21,875.00	0.00	21,875.00	(38,125.00)
Architectural Master Plan	30,000.00	0.00	0.00	0.00	(30,000.00)
School Technology Upgrades	25,000.00	0.00	0.00	0.00	(25,000.00)
Parsonage and Teacherage Work	20,000.00	10,491.53	0.00	10,491.53	(9,508.47)
Security Key Card System	8,000.00	0.00	0.00	0.00	(8,000.00)
Play Lot	0.00	2,500.00	0.00	2,500.00	2,500.00
New School Carpet	0.00	25,595.44	0.00	25,595.44	25,595.44
Property Upkeep	0.00	3,910.00	0.00	3,910.00	3,910.00
Capital Loan Princpal	35,000.00	11,075.43	839.48	11,914.91	(23,085.09)
Capital Loan Interest	40,000.00	9,404.57	1,208.52	10,613.09	(29,386.91)
Total Expenses	<u>250,000.00</u>	<u>91,366.97</u>	<u>11,838.00</u>	<u>103,204.97</u>	<u>(146,795.03)</u>

Balance Sheet

Pilgrim Lutheran Church and School
4300 N. Winchester
Chicago, IL 60613
Dec 31 2015

ASSETS

Cash Accounts

Operating Funds - MB Financial	72,490.60
Operating Funds - Debit Card - MB Financial	1,281.27
Sec Dep Savings 4310 #1 - MB Financial	1,100.00
Sec Dep Savings 4314 #1 - MB Financial	1,350.00
Designated Funds - MB Financial	72,783.23
Capital Funds - MB Financial	49,491.76
School Checking Account - MB Financial	38,780.93
School Reserve Account	0.00

Cash Accounts Total		237,277.79
----------------------------	--	------------

Fixed Assets

Church&School Buildings-4300	5,100,000.00
Faculty Residence-4310	400,000.00
Faculty Residence-4314	400,000.00
Parsonage-4332	600,000.00
Furnishings/Church & School	200,000.00

Fixed Assets Total		6,700,000.00
---------------------------	--	--------------

Other Assets

Endowment	244,633.17
Dave Maring Endowment Fund	52,044.73
Investments	10,201.59
Accounts Receivable	0.00

Other Assets Total		306,879.49
---------------------------	--	------------

TOTAL ASSETS		<u><u>7,244,157.28</u></u>
---------------------	--	----------------------------

LIABILITIES AND FUNDS

LIABILITIES

Current Liabilities

Payroll Clearing	0.00
Payroll Taxes Payable	0.00

Current Liabilities Total		0.00
----------------------------------	--	------

Long Term Liabilities

MIF Capital Loan	203,727.39
Energy Efficiency Loan	0.00

Long Term Liabilities Total		203,727.39
------------------------------------	--	------------

TOTAL LIABILITIES

	203,727.39
--	------------

FUND BALANCES**Operating Funds**

Church and School Operating	84,559.08
-----------------------------	-----------

Operating Funds Total		84,559.08
------------------------------	--	-----------

School Funds

School Checking	(247.22)
School Reserve	0.00
School Lunchroom	0.00
Accreditation Savings	0.00
Athletic Fund	(405.18)
Band	(1,973.99)
Brian Russell Memorial Tuition Assistance	0.00
Chapel	2,414.55
Deficits and Credits	718.34
Eighth Grade Accrued	2,659.96
Eighth Grade Current Year Trip	5,584.93
Fundraising 2010/11	
Eighth Grade Service & Order	0.00
Eighth Grade Trip Fees	(1,758.00)
Eighth Grade Dinner	(2,309.33)
Field Trips	2,339.72
Library	2,840.40
Text Book Fund	3,146.95
Misc Checks	(33.64)
Operetta	1,000.00
Principal's Group	0.00
Special Education Materials	2,704.83
Substitute Teachers Special Circumstances	(67.85)
Sulzer Grant	2,500.00
Teacher's Dinner Fund(school pic \$)	11.21
Teacher's Gift Collection	381.16
Technology	1,631.45
Recognition Fund	0.00
Thrivent Early Childhood Fund	0.00

Raiser		
Walcamp Outdoor Education	(443.00)	
Property/Equipment Special	0.00	
Projects		
Wish List	122.84	
Yearbook	2,504.42	
Fund-A-Need	2,815.38	
Trivia Night	480.00	
Seventh Grade Fundraising	705.00	
Student Activity Account	71.08	
Expenses to be reimbursed	266.30	
School Funds Total		27,660.31
Designated Funds		
<Accounts Without Sub-Categories>		
Disaster Relief	40.00	
Other Missions Fund	74.00	
Endowment Fund	5,591.00	
El Salvador Build Resurrection	3,615.00	
El Salvador Child Sponsorship Fund	180.00	
Common Food Pantry Fund	1,439.37	
Lincoln Square Food Pantry	163.62	
El Salvador Mission Fund	40.00	
El Salvador Scholarships	20.00	
El Salvador Solar Project	100.00	
Hot Meal Fund	452.35	
El Salvador Farming Hope	3,455.00	
El Salvador Pastoral Team	300.00	
World Hunger Appeal	1,261.85	
World Missions Fund	0.00	
Missionary Support	70.00	
Lalissa Gemechis Scholarship Fund	921.21	
Kids Care	6,422.76	
Lay Ministry	60.00	
ArtSmart	658.54	
<Accounts Without Sub-Categories> Total		24,864.70
School		
Dave Maring Endowment Fund	1,882.00	
School Total		1,882.00
Designated Funds Total		26,746.70
Designated Reserve Funds		
Discretionary Fund	629.11	
Centennial Fund	2,719.50	
Landscaping Fund	22.90	

Special Events Fund	776.35	
Library Grants & Gifts	0.00	
Property Reserve Fund	21.60	
Safety Fund	665.00	
Memorial Fund	21,587.93	
Music Program	1,759.86	
Orff Instruments Fund	83.76	
Parlor Renovation Fund	90.58	
Quilters Fund	503.79	
Youth Fund	1,003.72	
Sunday School	(116.47)	
MOPS and MOMSnext	298.60	
Registration Fees	2,515.00	
Operating Reserve	50,398.49	
Accrued income and expense	0.00	
Designated Reserve Funds Total		82,959.72
Hot Meals Funds		
Hot Meals Checking	0.00	
Hot Meals Funds Total		0.00
Capital Campaign Funds		
Playlot Campaign	745.54	
Growing Forward	14,606.44	
Capital Campaign Funds Total		15,351.98
Equity Funds		
Dave Maring Endowment Fund	52,044.73	
Equity Funds Total		52,044.73
Equity Funds		
Building Equity Fund	6,496,272.61	
Endowment	244,633.17	
Investments	10,201.59	
Equity Funds Total		6,751,107.37
TOTAL FUNDS		<u><u>7,040,429.89</u></u>
TOTAL LIABILITIES AND FUNDS		<u><u>7,244,157.28</u></u>

Pilgrim Lutheran Church and School

2015 Growing Forward Capital Campaign Report

Dear Pilgrim Congregation,

The Capital Campaign Committee would like to report the following regarding the Growing Forward Campaign for the 2015 year. Please find below the details below noting the overall giving towards the three year campaign, what projects and disbursements have been completed this year and what is anticipated to be accomplished in 2016. We ask that you prayerfully consider still contributing to the Growing Forward Campaign for the balance of our three years of commitment, so that we can continue to fund necessary projects and initiatives focused around our church, our school, our nearby neighborhoods and our greater world community overall.

Thank you very much,

Jim Volkens and Gerhardt Boecler

Growing Forward Capital Campaign Co-Chairs

ACTUAL 2015 CAPITAL CAMPAIGN INCOME AS OF 12/31/15

Balance from last Capital Campaign	\$49,537.80
Contributions	\$68,273.61
Totals	\$117,811.41

2015 CAPITAL CAMPAIGN PROJECTS AND DISBURSEMENTS COMPLETED TO DATE

Project Description	Amount
Energy Auto Retrofit	\$1,905.00
Lead Mitigation for 4314 #1 - (1st half)	\$3,050.00
Lighting Project - ComEd SBES incentive program	\$2,005.00
New Windows for 4314 N. Winchester #2	\$1,800.00
Reimburse for Hotel for occupants of 4314 Winchester during lead abatement	\$356.61
Extra charge for Hotel for occupants of 4314 Winchester during lead abatement	\$34.92
Lead Mitigation for 4314 #1 - (2nd half)	\$3,050.00
Full payment for Change Order of lead mitigation dated 3/23/15	\$2,200.00
Kitchen Fire Suppression System Upgrade	\$1,362.00
Good Gifts Family Farm	\$715.00
Walk for Water	\$800.00
Carpet tiles	\$25,595.44
School Roof	\$21,875.00
Capital Loan Principal	\$11,914.91
Capital Loan Interest	\$10,613.09
Mission Gifts	\$14,790.00
Playlot Refurbishing Project	\$2,500.00
Total	\$104,566.97

PROPOSED 2016 CAPITAL CAMPAIGN PROJECTS AND DISBURSEMENTS

Project Description	Amount
Mission Gift Fund	\$5,000.00
Pilgrim Lutheran MIF Mortgage Refinance	N/A
Teacherage Exterior and Interior Tuckpointing	\$12,800.00
Teacherage Drywall and Paint	\$1,000.00

Pilgrim Lutheran Church and School
2015 Properties Committee Report

Pilgrim Congregation,

Please find details below regarding Pilgrim Lutheran Church and School property and facility projects completed for 2015 and those proposed for 2016. Please contact me with any questions or concerns.

Thank you very much,

Jim Volkens

Pilgrim Lutheran Properties Committee

2015 PROPERTIES PROJECTS COMPLETED

Project Description	Amount
Energy Auto Retrofit	\$1,905.00
Lighting Project - ComEd SBES incentive program	\$2,005.00
New Windows for 4314 N. Winchester #2	\$1,800.00
Lead Mitigation for 4314 #1 - (1 st half)	\$3,050.00
Lead Mitigation for 4314 #1 - (2 nd half)	\$3,050.00
Carpet tiles	\$25,595.44
School Roof	\$21,875.00
Playlot Refurbishing Project – (1 st Phase)	\$46,383.38
Kitchen Fire Suppression System Upgrade	\$1,362.00
Total	\$107,025.82

PROPOSED 2016 PROPERTIES PROJECTS

Project Description
Fire Safety Vendor Consolidation
Playlot Refurbishing Project – (2 nd Phase)
Teacherage Exterior and Interior Tuckpointing
Teacherage Drywall and Paint

Pilgrim Lutheran Church and School

Fundraising
Report for Congregational Meeting
January 31, 2016

Year 2015

Operation CIP: Profits paid to Unified Budget line

Certificate sales: Pilgrim: \$131,159 up 2% Profit: \$6,557.95

Magazine Sales: Profit: \$1,073.37

Target: \$565.78 last year at 1 percent of sales

E-scrip: (Safeway, etc.) \$7.10

Total profit: \$8,204.20

Distributions: \$3000

More to be paid in January 2016 when "Certificates for Certificates" are redeemed.

OpCIP cash available as of 1-6-2015: \$4,933.35 checkbook \$850.00 in checks/cash

OpCIP gift cards on hand as of 1-6-2014: \$11,375.00

Outstanding vouchers: (-\$620)

Owed: \$700.00

Total: \$17,238.35

Other Fundraising Income: profit unless expenses listed

Market Day: \$898.52 profits paid to Unified Budget Line Item. Program canceled June 2015

Flea Market: Not held this year

Respectfully submitted,
Anne W. Barsano
Operation CIP Chair



Pilgrim Lutheran Church and School

Pilgrim Endowment Committee

2015 Report

The Endowment Committee concluded a successful 2015 at its end-of-year meeting on December 1, 2015.

The committee: Secretary Amy Bergren, Chair Marian Azzaro, Treasurer Joe Cardo, Gerhardt Boecler, Wayne Heintz, Pastor Kristian, ex-officio and Mike Suhajda, ex-officio, met quarterly throughout the year to review the status of the Endowment accounts and at the end of the year to vote on disbursements.

Treasurer's Report:

- The ELCA Endowment Account balance as of 10/31/2015: \$ 243,163.24
- The MIF balance (checking account) as of 9/30/2015: \$702.17
- 2015 disbursement budget: \$11,539.25 (calculated as 5% of the most recent rolling three-year average fund balance, and rounded up for disbursement purposes)

Continuing with this committee's previously determined priorities, the committee voted disbursements primarily in support of local educational and social services causes as follows:

Pilgrim Tuition Assistance	\$ 3,539.25
Luther North Tuition Assistance	\$ 3,000
Uptown Ministry	\$ 750
Common Food Pantry	\$ 750
Lakeview Pantry	\$ 750
The Crib	\$ 750
Ravenswood Community Services	\$ 500
Lincoln Square Friendship Center	\$ 500
Coat Angels	\$ 500

In addition to sending these donations, earlier in the year the committee disbursed \$500 to Lutheran World Relief for support of its efforts in response to the earthquake victims in Nepal, thus the total of \$11,539.25.

The first 2016 meeting of the Endowment Committee will take place at 6:30 PM on February 9, 2016.



2015 DAVE MARING SCHOOL ENDOWMENT REPORT

A huge thank you to my fellow committee members, Alison Hays, Debbie Suhajda, Samantha Doerfler, Dale Halter, Anita Zajac, Pastor Kristian, Chris Comella, Greg Otsuka and Mike Suhajda. We had a busy and productive 2015.

The congregation approved the establishment of the fund at the congregational meeting in January 2014. As of November 30, 2015 we have \$55,435.83 in the fund and have disbursed \$2602.25 to the school community. Disbursements will amount to approximately \$2800.00 in 2016. During 2015 we reallocated the majority of the funds to the ELCA Pooled Trust managed by the ELCA Foundation. We kept enough dollars in the Mission Investment Fund (a fixed account) to accommodate approximately 3 years of grant requests; this will allow us to ride out any downturns in the market.

In 2015 we created a brochure to help promote the endowment. We also held our second event in October and hope to increase the number of attendees in 2016.

We welcomed a new board member in 2016, Heidi Thompson, a school parent. Heidi will be filling a vacancy created as Alison Hays completed her two year term on the board. Also, Debbie Suhajda has agreed to a new 3-year term. THANKS to Debbie and Heidi for agreeing to serve on the endowment committee!

May God continue to bless the mission of Pilgrim Lutheran Church and School.

Respectfully submitted,
Ed Nelson
DaveMaring Endowment Chair
Jan 31, 2016



Parish Life
Annual Report for 2015

*The purpose of Parish Life is to offer fellowship opportunities
within and outside the church community.*

Highlights of 2015

Volunteer Appreciation Day and Fair: Not held this year.

Garden Walk: Not held

Fall Festival/ Block Party: September 13th

A time for the Pilgrim community to get together for good food, fun and games and fellowship- later than usual due to late school start.

Crop Walk: We didn't participate this year. ? Youth group

Caroling: December 13th

Two groups of adults and children either walked through the neighborhood and visited stores on Montrose or visited St. Paul's House singing Christmas carols. After caroling, everyone, including others who didn't carol, went to the parsonage for cocoa, Sloppy Joes, macaroni & cheese, salads and dessert.

The committee also:

Provides cakes for baptisms, First Communion, New Member Sundays and other recognition days throughout the year.

Organizes Coffee Hour teams.

Sends cards to members for various reasons.

Helps with Pictorial Directories as needed.

Supports dinner outings to restaurants offering varied ethnic cuisines.

Collects hat and mittens for various groups outside Pilgrim

Committee members*: Anne Barsano, Shellie Volkens, Sue Couch, Mary Girten.

Submitted by,
Anne Barsano.

****This committee should consist of at least seven members each for inreach and outreach activities.***



HOT MEALS

HOT MEALS at Pilgrim Lutheran Church is a 25-year-old ministry to the homeless of the northern part of Chicago - more specifically many of the guests come from the Uptown area and the American Indian Center. HOT MEALS serves a hot noon meal every Saturday for approximately fifty guests in Maring Hall at Pilgrim. This ministry has developed into ten teams of volunteers - approximately four to eight members per team. Each team has their own shopper and develops their own menu - the cost is sometimes covered by the members of a team OR the church provides the money from donations specifically for HOT MEALS.

In the last five years, HOT MEALS has come to depend on some of the grade school classes for table decorations and cookies for dessert. A plan for 2016 includes members of a grade school class actually helping in the cooking and serving.

For three years now, the teams have benefited from students from Lane Tech High School volunteering every Saturday; these students (Homeland Helpers) also have planned a Christmas Party (for two years) for all of our guests - the homeless. Students of Queen of Angels School also provide some helping hands.

An experiment called HOT MEALS PLUS was planned and implemented for approximately ten weeks in the fall of 2015. A meal from HOT MEALS was delivered to six shut-ins every Saturday; the drivers were primarily new volunteers to the church program. The experiment was temporarily halted when the number of drivers decreased. The hope is to restart the program again in 2016 once additional drivers and recipients are identified.



2015 Block Party Report Parish Life

*In Christ's love, we Gather, Prepare, and Send all as leaders
for God's mission in the world (GPS).*

2015 Block Party

Pilgrim was again blessed with wonderful weather for the 2015 Block Party on Sunday, September 13, 2015. The day began with an outdoor service at 10:00, with the block party following immediately after the service.

New for 2015, proceeds and a Thrivent matching grant were provided to support our fall "Season of Service" project in support of UCAN. After the Thrivent funds were included, \$1,400 was donated to UCAN. We also added wood-oven fired pizza's provided by Pilgrim neighbor David Hirsch.

Music was provided by Scream Blue, while the PTL again donated the Petting Zoo. Other activities included the bouncy house, face painting, games for kids of all ages, penny social, quilt show, and the cake walk.

The 7th grade provided drink sales and earned \$705 for their class fund.

Event flyers were distributed to houses in the neighborhood by the 7th and 8th grade class and were hung throughout the neighborhood. The event was well attended.

2016 Block Party Goals

The tentative date for the 2016 block party is September 18, 2016.

A new block party chairperson needs to be identified. The 2015 planning team will be available to provide information and guidance, but both Anne Barsano and Shellie Riedle Volkens are unable to take leadership roles in 2016.



Global Partnerships Annual Report
by Anna-Kari Johnson

El Salvador!

We are so thankful for the wonderful work Pilgrim is doing to walk with our brothers and sisters in the Lutheran Church of El Salvador. Brian, Cathy, Eric, Jocelyn, and Abby Basler, Scott Russell, Ralph Maffucci, Kristian, Anna-Kari, Hope, Emanuel, and Xavier Johnson, Tonya Saiki, Yesenia Rivera, and Katie LaCroix, all were phenomenal representatives of Pilgrim and embodied our mission. We were part of a delegation of 38 people from Illinois, California, and Wisconsin who experienced the following highlights:

- Building Lord of Life Colón: Pastors Matías and Martina founded Lord of Life Lutheran Church (Señor de la Vida) in El Salvador 16 years ago to serve a densely populated urban area with many youth and families. The council leaders founded a life-changing scholarship program, “Seeds of Hope” which now helps almost 350 children go to school every year. Many of these students are very active in this and neighboring churches and many have already graduated from college. This church truly helps its surrounding community.

They have been doing all this ministry without a church building! For almost 3 years, this church has been meeting in a large house and yard on 3 acres of land. Recently, the owner has offered this land and large house to the church for \$36,000, which is a price only a fraction of the property's value. By the grace of God, over \$22,000 has been raised so far.

Pastor Matias' and Martina's vision for the land includes: starting a co-op farm (fruit, vegetables, chickens, and goats) to bring health and economic help, building a basketball court and a youth center, building homes for families currently living in mud huts, and a medical clinic.

This past summer, mission trip participants helped build a laminate shelter over an outdoor worship space on this land. We also helped take pictures of the students attending school to send back to their sponsors, mostly in Minnesota. We also joined Pastor Matias and Martina in praying that Lord of Life Lutheran Church would be able

to purchase the land. Pilgrim is blessed to be receiving offerings for this project from donors all over the country.

- Farming Hope (www.farminghope.org) we are partnering with a young man named Jamie Stark from Green Bay and an inspiring Salvadoran leader named Maria Trinidad to build a sustainable farm that is helping homeless men and women grow opportunity and healthy food in El Salvador. We worked on the farm alongside Salvadoran leaders to establish an aquaponics farm, to clear newly acquired land for a bigger harvest, and have committed to help sell the products like candles, cards, tea, and wine to help bring much needed income into this ministry. This is one of the most exciting projects we have ever been a part of!
- The Solar Ministry: Pilgrim, under the leadership of Ralph Maffucci and Scott Russell, has now installed solar energy systems in 20 homes in rural El Salvador... this has been life changing!
- We were blessed once again to participate in the Lutheran Church of El Salvador's annual "6th of August Peace March." This year's theme was: "Dialogue and Reconciliation Bring Peace (Matthew 18:15) ("El Diálogo y la Reconciliación Conducen a la Paz") (Mateo 18:15.)

Goals for 2016:

- To install solar energy systems in 8 more homes
- Working with our partners across the country, to raise \$14,000 to complete the purchase of land for a church and community center in Colón, El Salvador.
- To have at least 15 people from the Pilgrim community participate in this year's mission trip (July 31-August 10, 2016.)
- Increase the number of participants in this year's "Walk to Reach El Salvador" to raise awareness and funds for the El Salvador ministry (Sunday, May 22nd, 2016.)

Ethiopia!

Pilgrim has established a relationship with the Mekane Yesus (Lutheran) Church of Ethiopia. The great grandson of its founder, Onesimus Nesib, is a Pastor named Lalissa Daniel. Pilgrim has established a scholarship fund to support Pastor Lalissa as he gets his Ph D from Concordia Seminary in Fort Wayne, IN. We were also able to host his wife Bilisie and two children (Homey and Wada) in the parsonage for the first six months of 2015. Bilisie worked as a volunteer ministry associate, and Homey and Wada attended Pilgrim school.

South Africa!

From our sponsored missionary, Rev. Dr. Philip Knutson:

"The Global Young Reformers have initiated Living Reformation projects to help churches interpret the theme "Liberated by God's Grace" of both the 500th commemoration of the Reformation in 2017 and the LWF Twelfth Assembly that will be held in Windhoek, Namibia. Young reformers want to demonstrate how the sub-themes: Salvation - not for sale, Creation - not for sale, and Human beings - not for sale, relate to critical issues in their countries and resonate with concerns in other LWF regions. <https://youngreformers.lutheranworld.org/>

A special focus for me this year has been working with member churches of the Lutheran Communion in Southern Africa (LUCSA) through their Christian Education Desk to compile a resource book with and for youth and young adults. www.lucsa.org Thank you for your prayers and continuing support through the ELCA Global Church sponsorship program. Thank you for your participation in God's mission locally and globally.

May God's kingdom of grace, justice and peace come to us all.

*Yours faithfully,
Philip Knutson, Rev. Dr.
ELCA Global Mission
Regional Representative – Southern Africa
Johannesburg, South Africa
www.southernafricanconnections.wordpress.com*



Worship Committee 2015 Annual Report

Committee membership: Beata Halter, Karen Huelskoetter, Pastor Kristian Johnson, Michael Knuth, Renee Stuedemann, Chris Wallis

2015 Accomplishments:

Gathering: The Worship Committee continues to coordinate the various components (music, worship and communion assistants, lectors, ushers, bread bakers, altar preparation, decorations) needed to conduct worship. New helpers were recruited for most categories. Families of Vacation Bible School kids were invited to a special Sunday Service at which the kids presented one of the lesson-dramas (Jesus Heals the Blind Man) and music from the program. Families of First Communion students again participated in the Maundy Thursday service, and a 4:30 Good Friday service involved youth and children presenting a drama. Children also enacted the Nativity story at the 4:30 Christmas Eve service. We also continued the tradition of Lenten Soup Suppers, and had an Advent potluck on one Wednesday evening.

Preparing: There have been opportunities for lay preaching either in the form of temple talks or sermons. Our two ministry students, Hans and Marissa Becklin, have also been actively participating in worship.

Sending: Events such as distribution of ashes at the L station, leading a procession around the neighborhood on Palm Sunday, Christmas caroling, banners with service times for Holy Week and Christmas, have reached out to the surrounding community.

2016 Goals:

For 2016, we continue to seek ways to involve more people of all ages in worship, whether through reading the Word, distributing communion, music, preparing the sanctuary and altar for worship, or welcoming worshipers. This year we will emphasize involving the confirmation students as lectors. In conjunction with the Sunday School faculty and music ministers, changes to the 10:30 service resulting from moving Sunday School to 10:15 will also be reviewed in order to allow kids' participation in worship without compromising Sunday School instruction.



Pilgrim Lutheran Church and School

**Sunday School
Annual Report for 2015**

Sunday School Faculty: Lynn Boecler, Valerie Carlson, Sue Couch, Kathy Danner, Samantha Doerfler, Anna-Kari Johnson, Dana Thomas, Shellie Volkens, Chris Wallis. Substitutes: Judy Daniel and Cheryl Saiki

2015 Accomplishments:

Gathering: The Pilgrim Sunday School program welcomes children aged 3 through 5th grade. The winter-spring term ran from January through May 17 and the fall term from September 7 through December 20. Average attendance was 12. We have been using the Concordia Publishing program, Growing in Christ, which offers age-appropriate discussion of Bible stories, craft projects, and suggestions for in-home devotions.

A major change to the program occurred in September when we shifted from our old 9:15 to 10:15 time slot, to a 10:15 start, taking the kids out of church until they rejoin the adult worshipers in time for communion. A few wrinkles are still being ironed out, notably how to allow for the children to participate in musical or dramatic presentations during the service without completely compromising instruction time. A number of new teachers were recruited, spreading out the trade-off between teaching and adult worship time for all the volunteers.

Pilgrim again offered a week of Vacation Bible School from June 22-26. This Bible-based Lutheran curriculum "Camp Discovery" offered story-telling, drama, craft and games to 48 children (many from the neighborhood and other churches) and involved 23 volunteers, including 7 older kids who served as helpers at the various activity stations and assisted with the groups of younger children.

Preparing: Through stories, music and crafts, the children are taught stories from Scripture and learn ways to incorporate their faith into their daily lives. As part of this, the Sunday School participated in worship by singing at various service and such events as the Palm Sunday procession and re-enacting the Christmas story.

Sending: In addition to the faith lessons taught in the classrooms, and materials to supplement those lessons at home, the children had opportunities to put faith into action by making cards for shut-ins, fabric squares for Project Linus, and layettes for Lutheran World Relief.

2016 Goals:

We are still working on refining the new format. If parents wish to continue the program over the summer we will need to recruit additional help and select a summer curriculum, since the one we currently use does not have a June-August session.

This year Vacation Bible School will take place the week of July 25 and will be run in conjunction with Luther Memorial. It is hoped that this will increase the pool of adult and youth volunteers. The date was chosen because of CPS' later end date and to avoid the Pilgrim Summer Enrichment Program.

The Sunday School will continue to participate in Worship through song and drama, and to serve by assembling layettes, helping with Project Linus, and other projects.



Care Ministry Team

2016 Annual Report

The newest incarnation of the Care Ministry Team at Pilgrim began taking shape in June 2014 and the orientation meeting took place in September of that year. Throughout the first year, 20 members of the congregation expressed interest in being part of the group and 12 people (homebound seniors) received regular visits or phone calls from team members.

The number of people actively involved has varied but, currently, 9 team members are making ongoing visits or calls to 10 people. (Another team member coordinates the Card Ministry.) The commitment on the part of the Care Ministry Team is to make a visit or call every month to each person, and to bring communion (if desired) at least every other month.

Group meetings are held on a regular basis (currently quarterly) to provide an opportunity to share our experiences and to voice any concerns, questions or suggestions re: this ministry. An adult education series, titled “Your Legacy: Family, Church, Charity,” was held this year. Two sessions (9/20 and 10/04) re: advance financial planning were presented by Ed Nelson and one session (9/27) re: advance health care planning was presented by Judy Daniel.

Christmas Care Baskets were filled and delivered two years in a row by volunteers from the church and school. Fifty-five baskets were delivered in 2015. Also, a partnership with the Salvation Army senior outreach initiative, “Two Are Better than One,” has been formed. They have provided us with valuable in-services as well one referral so far, of a senior in need of visits.

Last but not least, names of people who need visits, as well as more people to join the team and make visits, are always welcome. Coordinators are Claudia George and Judy Daniel.

Submitted by,
Claudia George



Pilgrim Lutheran Church and School

Discipleship

Our two discipleship groups met twice monthly. We strengthened each other with prayer and encouragement as we were sent out to be people of peace in our various neighborhoods and environments.

From these two original groups two others have emerged. On Monday morning a group meets and an evening group of women meet during the week as well.

In the fall of this year we hope to launch the third generation of groups. It is an honor to be involved in this exciting, viable ministry. We are eager to share this life changing experience with others.

Sincerely,
Judith Kiehm

